

# CLASSIC ANTARCTICA

DETAILED ITINERARY

DISCOVERING THE ANTARCTIC PENINSULA

May 13/25



Antarctica offers so many extraordinary things to see and do, and traveling with Quark Expeditions offers multiple options to personalize your experience. We've designed this guide to help you identify what interests you most, so that you can start planning your version of the perfect expedition to the 7th Continent.

If this is your first visit, our classic Antarctic Explorer voyage gives you the best of the stunning Antarctic Peninsula. Conquer the famed Drake Passage in your choice of stabilized, polar-class vessels; explore majestic natural environments by Zodiac, kayak or on foot; get excellent views of penguins, whales and other wildlife; and enjoy talks on history, biology and glaciology by onboard polar experts. You can personalize your adventure with options that suit your interests, and cross the 7th Continent off the list—your way.

## FACTS & HIGHLIGHTS

- 11 days • Start and finish in Ushuaia, Argentina • All meals, snacks, soft drinks and juices on board included • Free beer, standard wines, spirits, and cocktails during bar service hours and dinner • Pre-cruise hotel on a shared basis with breakfast included • An expedition parka to keep • Explore highlights of the Antarctic Peninsula • Enjoy presentations on wildlife, history, glaciology & geology by the onboard polar experts
- Experience abundant wildlife such as penguins, seals and whales • Immerse yourself in the icy realm of the Antarctic, with an optional paddling excursion • Travel safely and comfortably aboard an ice-strengthened vessel

## EXCLUSIVE 2025 DEPARTURE PROMOTION\*\*

(See page 2 for complete 2025/2026 departures and regular pricing)

**Nov 04–Nov 14, 2025**

Ocean Explorer	Price	Promo
Veranda Stateroom	- \$17095	- \$11967
Veranda Suite	- \$18095	- \$12667
Junior Suite	- \$21395	- \$14977

\*\*Exclusive promotional pricing is subject to availability and may be withdrawn if availability changes. The above departure does not include ElderTreks exclusive \$250 shipboard credit.

## Activity Level: 1

### Comfort Level:

- Must be able to get in and out of zodiacs from the ship
- Walking on ice and snow during landings • Drake Passage can be rough during crossing • Must have proper winter gear to bear the elements

## ACCOMMODATIONS

Travel aboard an ice-strengthened vessel.

**ELDERTREKS**



**SMALL GROUP  
EXOTIC ADVENTURES  
FOR TRAVELERS 50 PLUS**

## 2025/2026 DEPARTURES

### World Explorer

Feb 18 - Feb 28, 2025  
Mar 11 - Mar 21, 2025  
Nov 06 - Nov 16, 2025  
Nov 15 - Nov 25, 2025  
Nov 24 - Dec 04, 2025  
Dec 27, 2025 - Jan 06, 2026  
Jan 05 - Jan 15, 2026  
Jan 14 - Jan 24, 2026  
Jan 23 - Feb 02, 2026  
Feb 17 - Feb 27, 2026  
Feb 26 - Mar 08, 2026

### Ocean Explorer

Mar 16 - Mar 26, 2025  
Dec 01 - Dec 11, 2025  
Dec 10 - Dec 20, 2025  
Dec 19 - Dec 29, 2025

ElderTreks clients receive a  
\$250 shipboard credit on all  
non-discounted departures

## PRICING PER PERSON

### World Explorer - from:

Veranda Suite	-	\$18295
Infinity Suite	-	\$19395
Superior Suite	-	\$22895

### Ocean Explorer - from:

Veranda Stateroom	-	\$17095
Veranda Suite	-	\$18095
Junior Suite	-	\$21395

## DAY 1 USHUAIA, ARGENTINA

You will begin your journey in Ushuaia, a small but bustling port town at the tip of South America. This Argentine town is an ideal gateway for you to explore the southern extent of Patagonia while preparing for your adventure ahead. Enjoy the mountains or sample handcrafted chocolate at a café in town.

Overnight at a hotel in Ushuaia.

## DAY 2 USHUAIA, EMBARKATION DAY

Embarkation will occur in the late afternoon, after which your vessel will sail down the historic Beagle Channel, which transects the Tierra del Fuego archipelago in the extreme south of South America. Expect an air of anticipation as you depart—the next time you see land, you'll be on the world's most southern continent!

Overnight on board the ship.

## DAYS 3-4 CROSSING THE DRAKE PASSAGE

Your days at sea are filled with presentations



led by your Expedition Team on photography, wildlife, glaciology, and history. In between presentations, spend time on deck looking for wildlife, or chatting with your shipmates over a drink at the bar.

Overnight on board the ship.

---

### **DAYS 5-8 SOUTH SHETLAND ISLANDS AND ANTARCTIC PENINSULA**

The most common reaction upon reaching the 7th Continent is a sense of reverence and awe. The experience is beyond words, since few places are as untouched and enduring as Antarctica. You will begin to appreciate why this region has long captivated the attention of explorers and travelers alike. Every time we visit Antarctica, we witness something new or unexpected, which means that your expedition will be unlike any other—creating a unique, personal experience.

Each day, you will take Zodiac excursions from the ship to explore glaciated bays, channels and landing sites. Your Expedition Team will take care of you at each landing, whether you are hiking the Antarctic landscape, visiting a research station or consorting with chinstrap, Adélie and gentoo penguins, all of which can be found here. Keep an eye out for Weddell, fur, crabeater and leopard seals as well as curious whales, such as humpbacks, minke, or perhaps orcas while on a Zodiac cruise. Each excursion will present a new array of creatures to fascinate you and keep your camera busy.

Amid the serene silence of Antarctica, noisy interludes become indelible memories, such as penguins squabbling over prized pebbles, or the boom and crack of a calving glacier.

Every day will be different, having been carefully crafted by your Expedition Team to inspire and educate you about this wonderful part of the world.

Overnight on board the ship.

---

### **DAYS 9-10 CROSSING THE DRAKE PASSAGE**

The journey back across the Drake Passage provides final opportunities to enjoy the crisp Antarctic air. Spend time on the deck, watching for seabirds and scouting for whales, enjoy presentations by your Expedition Team and celebrate the experiences shared exploring Antarctica.

Overnight on board the ship.

---

### **DAY 11 DISEMBARK IN USHUAIA**

You will arrive in Ushuaia in the morning, which allows for you to continue your adventure onward or catch your flights home.





## THE OCEAN EXPLORER DETAILS:



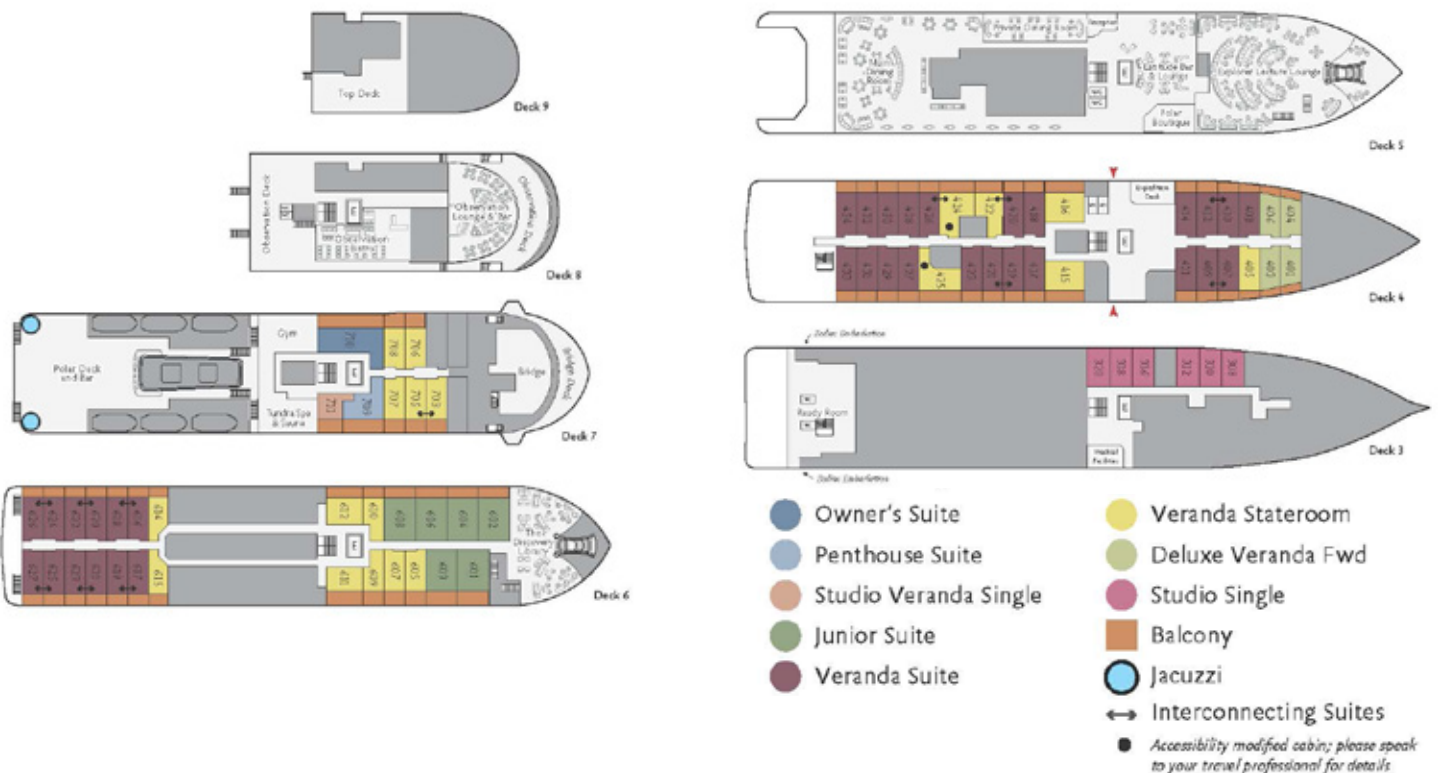
Ocean Explorer, the newest addition to our fleet, is modern, elegant and purpose-built for polar exploration. The 138-passenger vessel has been designed with the latest in expedition ship technology. One of the ship's key features is the ULSTEIN X-BOW®, a marine engineering innovation that ensures a comfortable and smooth sailing experience thanks to the inverted bow. With its distinctive X-Bow design and

remarkable twostory forward lounge, Ocean Explorer sets a striking stage for your expedition of a lifetime.

Spacious cabins feature a modern, bespoke Scandinavian design, and almost all have verandas. You can relax and find comfort in our signature Tundra Spa & Sauna (with large windows), well-equipped gym and two outdoor Jacuzzis.

Ocean Explorer has been designed with ample outdoor viewing areas and multi-height outer decks, which are ideal for long-view photography and wildlife viewing. The vessel is equipped with a fleet of 15 Zodiacs that enable guests to get off the ship quickly and safely for off-ship adventures. In addition to the well-appointed and spacious public areas, Ocean Explorer has an industry-leading mix of sustainability systems, including fuelefficient Rolls Royce engines.

## Ocean Explorer





Ocean Explorer - Observation Deck



Ocean Explorer - Main Dining Room



Ocean Explorer - Veranda Stateroom



## THE WORLD EXPLORER DETAILS:



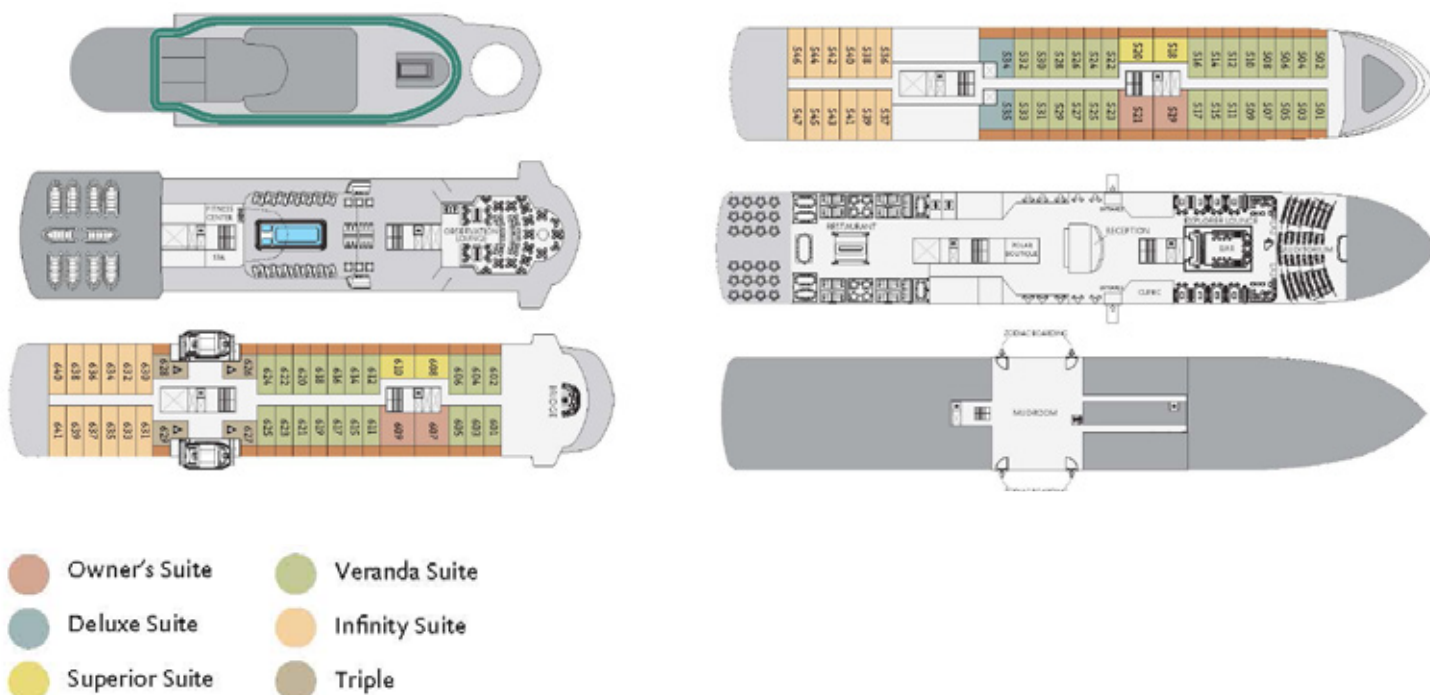
The World Explorer will be your home away from home during your expedition. This booklet will help you get acquainted with your new home. Give it a read as it does include important information about the facilities available to you and the procedures everyone adheres to while at sea.

The passionate Expedition Team and crew aboard this ship can't wait to show you around and take

you to places most people only dream about. Every day presents a new adventure. An early wake-up call may signal the sighting of nearby whales, while an afternoon Zodiac cruise may present you with the intense blues of passing icebergs. Polar travel is unlike any other type of travel, so please take a moment to get to know your ship.

Distinct and comfortable, refined and roomy—these attributes and more describe World Explorer. Every cabin has either a private walk-out or French balcony for direct ocean views. World Explorer also delivers plenty of public areas to unwind in after a day outdoors, including the glass-domed Observation Lounge, the Explorer Lounge, and a dedicated presentation theater. Health and wellness facilities feature an outdoor walking track, a fitness center and a spa, plus a sauna with a change room and shower.

## World Explorer

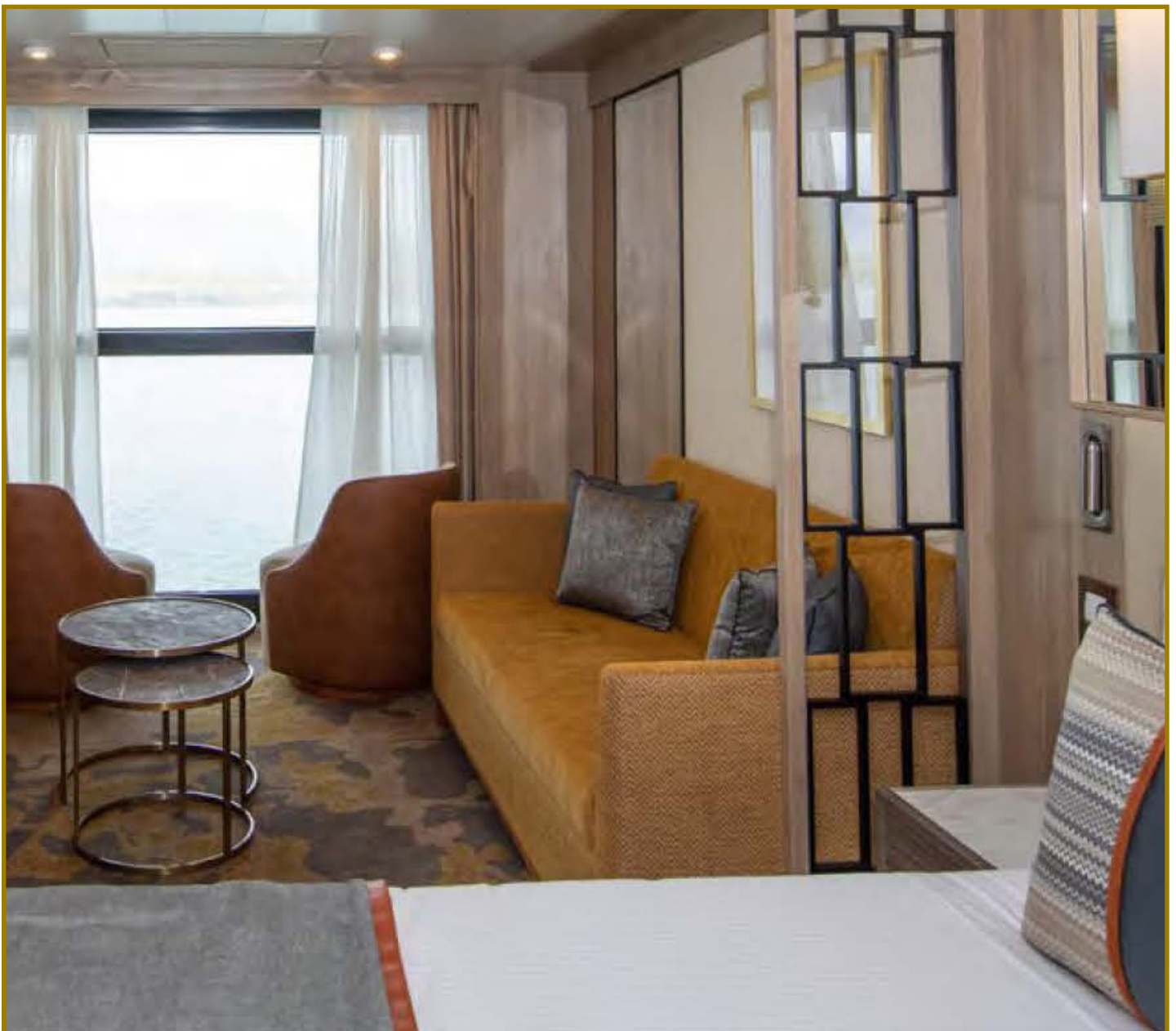




World Explorer - Lounge



World Explorer - Restaurant



World Explorer - Infinity Suite



## QUESTIONS & ANSWERS

### 1. HOW BIG ARE THE GROUPS?

The World Explorer is a 172 passenger vessel and the Ocean Explorer is a 138 passenger vessel.

### 2. WHAT IS INCLUDED IN THE TOUR PRICE?

All meals, snacks, soft drinks and juices on board throughout the voyage. Free beer, standard wines, spirits and cocktails during bar service hours and dinner. Complimentary coffee, tea and cocoa available around the clock. An expedition parka to keep. A pair of waterproof expedition boots on loan for landings and zodiac cruising excursions. Complimentary WiFi service on one device permitting basic internet browsing. Emergency evacuation insurance for all passengers to a maximum benefit of USD \$500,000 per person. Group transfer in Ushuaia from the airport to pre-expedition hotel on Day 1. Group transfer from hotel to ship on embarkation day. Group transfer upon disembarkation from ship to airport or luggage storage.

### 3. WHAT IS NOT INCLUDED IN THE TOUR PRICE?

International flights; government arrival and departures taxes; insurance covering baggage, cancellation, interruption and medical; mandatory

waterproof pants for zodiac landings; laundry, spa and personal charges; phone charges; voluntary gratuity for expedition staff and shipboard crew; additional overnight accommodation; adventure options (ie. kayaking); arrival and departure transfers, except where explicitly stated.

### 4. ARE THESE “EDUCATIONAL” TOURS?

There will be a variety of guests, expedition leaders and staff onboard who are ready and willing to share their knowledge of the region, geology and wildlife.

### 5. HOW DO WE TRAVEL DURING THE TOUR?

We cruise on our vessel and often use zodiac's for our adventure excursions.

### 6. WHAT ARE OUR ACCOMMODATIONS LIKE?

The ship offers interior and exterior cabins. All cabins have private washroom facilities, a phone for internal calls, radio, TV and air-conditioning. There are a variety of cabin categories available ranging from 9-30 m2 (100-320 sq ft). Please call for pricing and cabin availability.

### 7. WHAT ABOUT THE WEATHER?

We travel during the northern summer season. In general, we can experience temperatures between 0°C (32°F)





## **8. WHEN IS PAYMENT DUE?**

A non refundable deposit of 30% is due at the time of booking. The balance of the land payment is due 190 days before departure. Cancellation charges are applicable and these are outlined in the “Terms & Conditions” section of our brochure.

## **9. IS MEDICAL INSURANCE REQUIRED?**

Emergency evacuation insurance for all passengers to a maximum benefit of USD \$500,000 per person is included. Baggage, cancellation, interruption and medical travel insurance is not included and strongly recommended.

## **10. WHAT MEALS ARE INCLUDED?**

All meals, snacks, soft drinks and juices on board throughout the voyage. Free beer, standard wines, spirits and cocktails during bar service hours and dinner. Complimentary coffee, tea and cocoa available around the clock.

## **11. WHAT SHOULD I TAKE ON THE TOUR?**

There is a detailed “What to Take” list in our Trip Kit, which we will send to you after you have booked the trip.

## **12. CAN YOU ARRANGE MY FLIGHTS?**

We would be happy to take care of your air arrangements. ElderTreks offers personalized flight itineraries, not group flights. Stop over enroute, come in a few days early, or extend your stay. Call us for a customized itinerary.

## **13. WHAT IF I WOULD LIKE MORE INFORMATION?**

If you have any further questions about the adventure, please call our office for more details. A Trip Specialist will be happy to answer your questions. A Trip Kit containing further details on the destination will be sent to you once you have booked the trip.













