

THE NORTHWEST PASSAGE: WEST TO EAST

DETAILED ITINERARY

Jan 15/24



The Northwest Passage is one of the world's greatest voyages. Our fleet of Zodiacs guarantees excitement with every excursion.

The Arctic is calling. Pristine fjords. Looming glaciers. Jagged icebergs. Grand vistas, historic sites, graves, and abandoned outposts. Marine mammals, bears and birds... wonders await. You will find a warm welcome in Nunavut's communities, and Greenland offers geology, geography, and culture with a European flair.

Every day is a new adventure when sailing the Northwest Passage; hiking, photography, birding.

Exploring archaeology and spotting bears.

Visiting villages perched on mighty mountains.

Learning with our experts. Meeting the people who call the Arctic home. And sailing the passage at the top of the world!

This is not an ElderTreks operated tour. As such, participants on this tour are not exclusive ElderTreks clients and it may not adhere to ElderTreks' maximum size restrictions of our tours.

FACTS & HIGHLIGHTS

- 17 Days • Start in Kugluktuk (Coppermine), Canada and finish in Kangerlussuaq, Greenland • All meals on board included • Travel aboard the Ocean Endeavour • Voyage the length of Sondre Stromfjord • Seek polar bears, walrus, seabirds, and other Arctic wildlife in pristine natural environments • Experience the majesty of the Northern Lights • See the Franklin Expedition graves at Beechey Island • Watch for marine mammals and wildlife in Tallurutiup Imanga (Lancaster Sound) Marine Protected Area • Visit Aujuttuq (Grise Fiord), Canada's northernmost community • Seek your 'furthest north' in Smith Sound • Zodiac cruise among icebergs at Ilulissat Icefjord, a UNESCO World Heritage Site

DEPARTURE DATES & PRICE

Sep 01 – Sep 17, 2025

Triple Cabin	-	\$16,495 USD
Interior Twin	-	\$18,495 USD
Exterior Twin	-	\$19,995 USD
Main Twin	-	\$21,495 USD
Comfort Twin	-	\$22,995 USD
Select Twin	-	\$24,495 USD

Prices do not include \$2450 USD charter flights.

Activity Level: 1

Comfort Level:

Seas can be rough. Zodiac landings required.

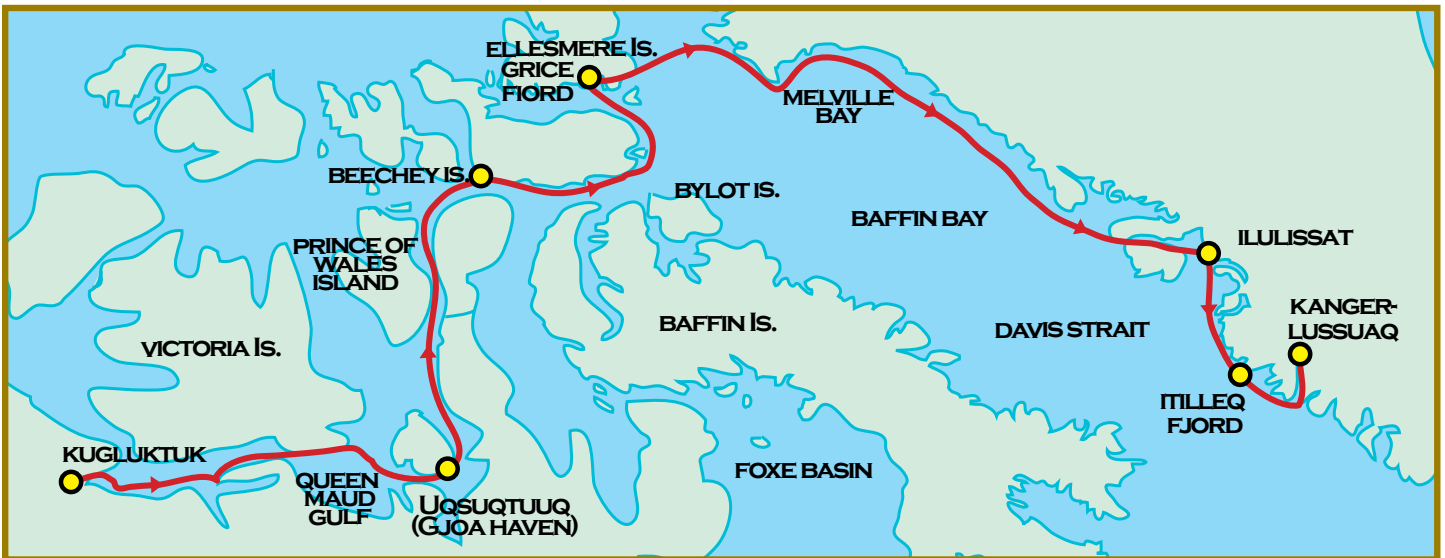
ACCOMMODATIONS

All travel aboard the Ocean Endeavour.

ELDERTREKS



SMALL GROUP
EXOTIC ADVENTURES
FOR TRAVELERS 50 PLUS



DAY 1 KUGLUKTUK (COPPERMINE), NUNAVUT

Located at the mouth of the Coppermine River, Kugluktuk is the westernmost community in Nunavut. Known for many years as Coppermine, the community reverted to its original Inuinnaqtun name—meaning “place of moving waters”—on January 1st, 1996. Our charter flight will land in Kugluktuk and we will embark Ocean Endeavour by Zodiac.

Iqaluktuuttiaq (Cambridge Bay), NU is an alternate embarkation point, and may be used based on sea, ice and weather conditions.

DAYS 2-4 KITIKMEOT REGION

The Kitikmeot Region consists of parts of Victoria Island, the adjacent part of the mainland as far as the Boothia Peninsula, King William Island, and the southern portion of Prince of Wales Island. Recently, the Kitikmeot Region has been in the news since the finding of the lost ships of the Franklin Expedition in its waters. It is Nunavut’s least-populated region, though wildlife abounds here both in the sea and on land. We’ll explore by Zodiac and on foot.



DAY 5 PRINCE REGENT INLET

This passage marks an area rich in marine and avian life. Thick-billed Murres, Ivory Gulls, beluga, narwhal and bowhead whales reside in the ice-strewn waters. In addition to abundant wildlife, we'll delve deeper into the exploration of the Northwest Passage and mercantile efforts of the Hudson's Bay Company.

DAY 6 BEECHEY ISLAND

In 1845, Sir John Franklin set out from England with HMS Erebus and HMS Terror, attempting to sail through the Northwest Passage. His crew overwintered at Beechey Island where three of his men died.

Numerous search parties later used Beechey as a depot and rendezvous. Amundsen,

Bernier, and Larsen visited Beechey. Thomas Morgan of HMS Investigator was buried there in 1854 alongside Franklin's men. The graves and the ruins of Northumberland House are a haunting memorial.

DAYS 7-8 TALLURUTIUP IMANGA (LANCASTER SOUND)

We will spend the day exploring Tallurutiup Imanga (Lancaster Sound), one of Canada's newest National Marine Conservation Areas.

Large populations of marine mammals, including narwhal, beluga, and bowhead whales transit and feed in this area. There is a great selection of landing sites available to choose from, depending on weather, wildlife, and sea conditions.

DAY 9 AUJUITTUQ (GRISE FIORD)

Aujuttuq means "place that never thaws".

1,150 kilometres above the Arctic Circle, Canada's

northernmost "civilian" community originated in the Cold War; in 1953, Inuit were relocated to Aujuttuq to boost Canadian sovereignty.

We'll be welcomed into the hamlet, where we will have a chance to meet members of the community, learn about their way of life, and hear their poignant stories.

DAYS 10-11 SMITH SOUND

Smith Sound, an ancient Inuit travel route, divides Ellesmere Island from Greenland, and served as the main route for explorers and adventurers searching for the North Pole. Adolphus Greely, Sir George Nares and Elisha Kent Kane all travelled these waters with varying degrees of success.

DAY 12 AT SEA

On this exploration day, we'll be making the most of what the wind, weather and wildlife have to offer. Our expedition staff will scan for polar bears, walrus, whales, seals, and seabirds as we go.

DAYS 13-14 NORTHWEST GREENLAND

We will explore stunning fjords that line the coast. Glaciers and icebergs abound here. In true expedition style, we will seek opportunities to hike, explore, and view wildlife as conditions allow.

DAY 15 ILULISSAT

Ilulissat translates literally into "iceberg", an apt name for this site at the mouth of the Ilulissat Icefjord—a UNESCO World Heritage Site. The icefjord is the outlet of the Sermeq Kujalleq Glacier, source of many of the icebergs in the North Atlantic.

Here, we will cruise in Zodiacs to appreciate the icebergs. And we'll visit the bustling town of Ilulissat, with its museums, cafes, craft shops, and busy fishing harbour.



DAY 16 ITILLEQ FJORD

The west Greenland coastline is a rich mixture of islands and complex coastal waterways. As we enter the Arctic autumn, the tundra foliage will be in gorgeous colour. We will be making an expedition stop here to explore the landscape of wild Greenland.

DAY 17 KANGERLUSSUAQ, GREENLAND

Sondre Stromfjord is one of the longest fjords in the world and boasts 168 kilometres of superb scenery. We end our adventure by sailing up this dramatic fjord.

Kangerlussuaq, the town at its eastern head, is a former US Air Force base and Greenland's primary flight hub. Here we will disembark Ocean Endeavour for our return charter flight to Toronto, ON.





THE OCEAN ENDEAVOUR DETAILS:



Maximum: 198 passengers

Outfitted with twenty Zodiacs, advanced navigation equipment, multiple lounges and a top deck observation room, the Ocean Endeavour is purpose-built for passenger experiences in remote environments. The Ocean Endeavour boasts a 1B ice class, enabling her to freely explore throughout the Arctic summer. Launched in 1982, she has had numerous upgrades, most recently in 2010 and 2014.



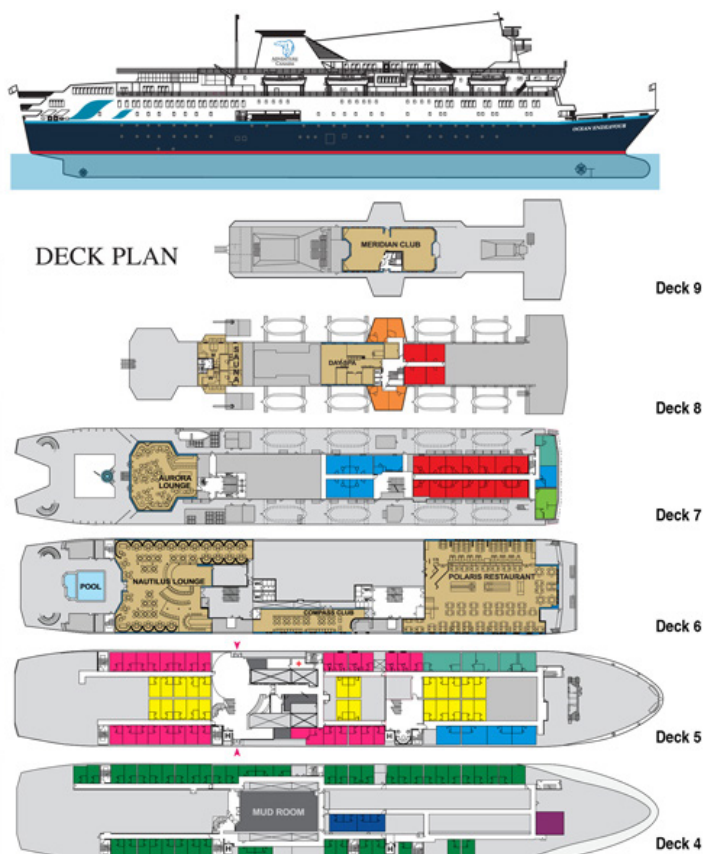
Aurora Lounge aboard the Ocean Endeavour.

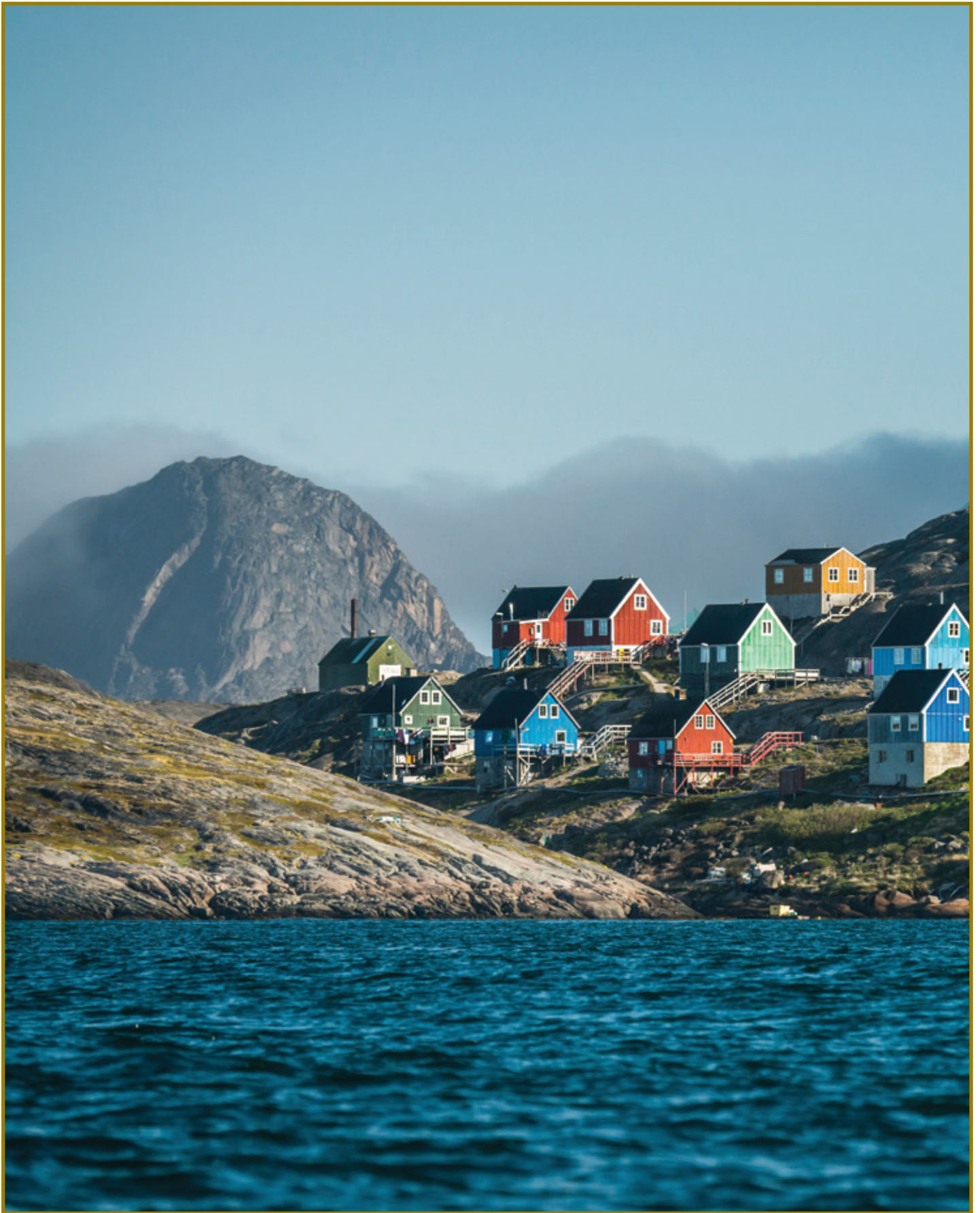


Exterior Twin Cabin aboard the Ocean Endeavour.

CABIN CLASS CATEGORIES

CATEGORY 2	TRIPLE
Deck four. Interior Cabin, three lower berths, private bath	
CATEGORY 3	INTERIOR TWIN
Deck five. Interior Cabin, two lower berths, private bath	
CATEGORY 4	EXTERIOR TWIN
Deck four. Porthole window, two lower berths, private bath	
CATEGORY 5	MAIN TWIN
Deck five. Picture window, two lower berths, private bath	
CATEGORY 6	COMFORT TWIN
Deck seven & eight. Picture windows (obstructed view), two lower berths or matrimonial bed, private bath, refrigerator	
CATEGORY 7	TOP DECK TWIN
Deck eight. Large picture windows (partial obstruction), matrimonial bed, private bath, refrigerator	
CATEGORY 8	SUPERIOR TWIN
Deck five & seven. Picture windows, twin or matrimonial bed, private bath, refrigerator	
CATEGORY 9	JUNIOR SUITE
Deck five & seven. Picture windows, separate sitting area, sofa, desk, refrigerator, matrimonial bed, private bath	
CATEGORY 10	SUITE
Deck seven. Picture windows overlooking the bow, separate sitting area, sofa, desk, refrigerator, matrimonial bed, private bath with full tub	







QUESTIONS & ANSWERS

1. HOW BIG ARE THE GROUPS?

The Ocean Endeavour is a 198 passenger vessel. On board you will also have between 10 to 15 resource staff.

2. WHAT IS INCLUDED IN THE TOUR PRICE?

From day 1 to disembarkation meals, entrance fees, and accommodations are included.

3. WHAT IS NOT INCLUDED IN THE TOUR PRICE?

International & charter flights, and tips. Personal expenses like alcoholic beverages, telephone calls, internet & laundry are not included and put onto their ship board account which is payable in USD the night prior to disembarkation. Ships crew gratuities are not included, we suggest between \$10-\$14 per day per passenger. This goes into a lump sum and distributed to the entire crew equally.

4. ARE THESE “EDUCATIONAL” TOURS?

Yes, in the broadest sense of the word, “educational”. We visit museums and local villages. We also have talks and discussions on many aspects of the history and culture of the areas travelled, but this is only one aspect of what we do. We believe that it is equally educational to meet new people on a non-commercial basis. Sometimes the most “educational” moments are spent having a cold drink with the locals.

5. HOW DO WE TRAVEL DURING THE TOUR?

We cruise on our vessel and often use zodiac’s for our adventure excursions.

6. WHAT ARE OUR ACCOMMODATIONS LIKE?

The ship offers interior and exterior cabins. All cabins have private washroom facilities, a phone for internal calls, radio, TV and air-conditioning. There are a variety of cabin categories available ranging from 9-30 m2 (100-320 sq ft). Please call for pricing and cabin availability.

7. WHAT ABOUT THE WEATHER?

We travel during the northern summer season. In general, we can experience temperatures between 35-55 F (1-12 C).

8. WHEN IS PAYMENT DUE?

A non-refundable deposit of \$2500 USD is due as soon as you decide to go and will reserve your place on the tour. The balance of the land payment is due 150 days before departure. Cancellation charges are applicable and these are outlined in the “Terms & Conditions” section of our brochure.

9. IS MEDICAL INSURANCE REQUIRED?

Insurance coverage is not included in the cost of your trip. Please note that medical insurance is required for this adventure with a minimum of \$500,000 coverage for evacuation insurance, including air ambulance. We strongly recommend cancellation and interruption insurance as well! ElderTreks offers comprehensive travel insurance and we are happy to provide you with a quote if you call our office. If you are purchasing insurance elsewhere, please ensure you provide the details to ElderTreks as soon as possible.

10. WHAT MEALS ARE INCLUDED?

All meals are included, starting with dinner on day 1 and finishing with breakfast on departure day.

11. WHAT SHOULD I TAKE ON THE TOUR?

There is a detailed “What to Take” list in our Trip Kit, which we will send to you after you have booked the trip.

12. CAN YOU ARRANGE MY FLIGHTS?

We would be happy to take care of your air arrangements. ElderTreks offers personalized flight itineraries, not group flights. Stop over enroute, come in a few days early, or extend your stay. Call us for a customized itinerary.

13. WHAT IF I WOULD LIKE MORE INFORMATION?

If you have any further questions about the adventure, please call our office for more details. A Trip Specialist will be happy to answer your questions. A Trip Kit containing further details on the destination will be sent to you once you have booked the trip.





