

HIGH ARCTIC EXPLORER

DETAILED ITINERARY

Mar 12/22



On this trip, we seek the wilds and the wonders of the Arctic, in the welcoming company of those who call it home! Beginning in Qausuittuq (Resolute Bay), we'll enter expedition mode as we seek polar bears, whales, birds, and muskoxen throughout Lancaster Sound. At Beechey Island, we'll pay our respects at the graves of three of Sir John Franklin's men; at Dundas Harbour, we'll explore the abandoned HBC and RCMP posts that once guarded the gateway to the Northwest Passage.

Mittimatalik (Pond Inlet) with its stunning views of Bylot Island is a dynamic contemporary Inuit community; we'll spend the day getting to know the place before striking out across Baffin Bay for Greenland. Towering mountains, pristine fjords, and colorful communities are among the attractions of this mighty Arctic island. The modern Greenlandic center of Ilulissat offers museums, shopping, and cafés with a European flair. This incredible adventure explore the best of Greenland and Nunavut!

FACTS & HIGHLIGHTS

- 13 Days • Start in Kangerlussuaq, Greenland, finish in Qausuittuq (Resolute), NU • All meals on board included
- Travel aboard the Ocean Endeavour • Visit the Franklin Expedition graves at Beechey Island • Marine mammals and wildlife in Tallurutiup Imanga (Lancaster Sound) National Marine Conservation Area • Hike on Devon Island, the largest uninhabited island on Earth • Enjoy an Inuit cultural welcome at Mittimatalik (Pond Inlet) • Take advantage of prime viewing opportunities for the rare ivory gull, considered a species at risk • Cruise among icebergs at Ilulissat Icefjord, a UNESCO World Heritage Site

DEPARTURE DATES & PRICE

Aug 03 – Aug 15, 2024

Aug 15 – Aug 27, 2024 (Runs in reverse)

Triple Cabin	- \$10995 USD
Interior Twin	- \$12295 USD
Exterior Twin	- \$13595 USD
Main Twin	- \$14295 USD
Comfort Twin	- \$14995 USD
Select Twin	- \$15795 USD

Charter flights are an additional \$2645 USD.

Activity Level: 1

Comfort Level:

Seas can be rough. Zodiac landings required.

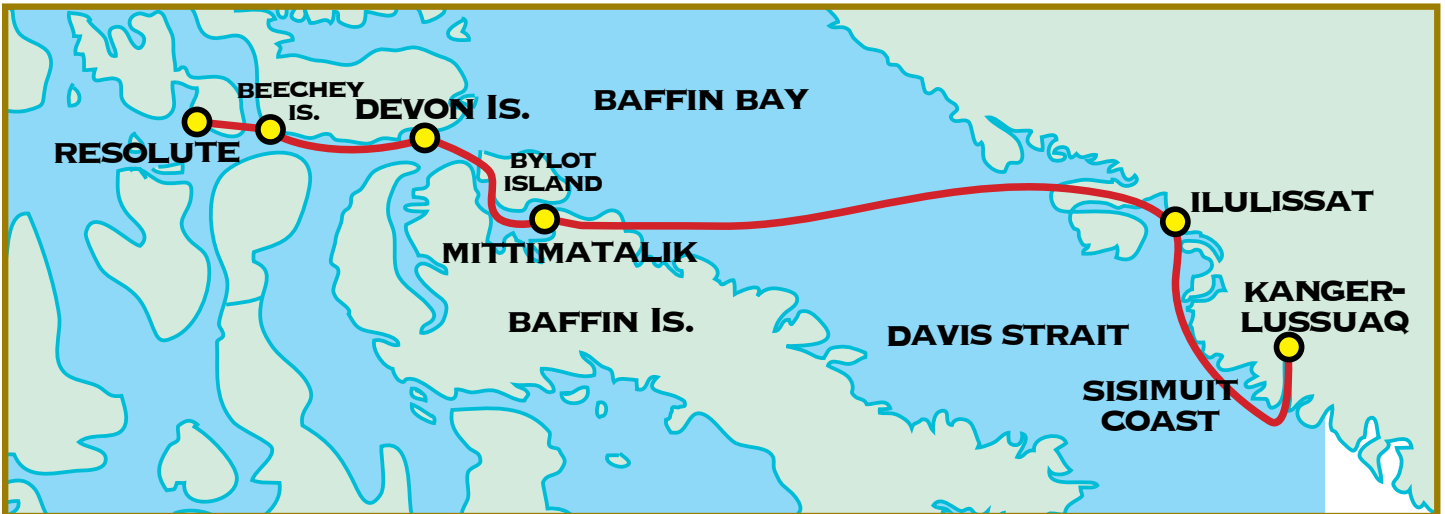
ACCOMMODATIONS

Travel aboard the Ocean Endeavour.

ELDERTREKS



**SMALL GROUP
EXOTIC ADVENTURES
FOR TRAVELERS 50 PLUS**



This is not an ElderTreks operated tour. As such, participants on this tour are not exclusive ElderTreks clients and it may not adhere to ElderTreks' maximum size restrictions of our tours.

DAY 1 KANGERLUSSUAQ, GREENLAND

Kangerlussuaq is a former U.S. Air Force base and Greenland's primary flight hub. Here we will be transferred by Zodiac to the Ocean Endeavour.

With 190 kilometres of superb scenery, Kangerlussuaq Fjord (Søndre Strømfjord) is one of the longest fjords in the world. We begin our adventure by sailing down this dramatic fjord, crossing the Arctic Circle as we go.

DAY 2 SISIMIUT COAST

West Greenland's complex coastal waterways include glaciers, islands, and fjords against a towering mountain backdrop. The waters are relatively warm here, due to the West Greenland Current and the subarctic location.

People have lived in the Sisimiut area for 4,500 years. For the first 2,000 years, the people of the Saqqaq culture occupied the area. 2,500 years ago, new people brought the Dorset culture to the Sisimiut



area. They lived here for 1,500 years and were followed by the people of the Thule culture—the ancestors of the modern-day Inuit population.

DAY 3 ILULISSAT

Ilulissat translates literally to “iceberg”—an apt name for this site at the mouth of the Ilulissat Icefjord, a UNESCO World Heritage Site. The icefjord is the outlet of the Sermeq Kujalleq glacier, a source of many of the icebergs in the North Atlantic. Here, we will cruise in our fleet of Zodiacs to appreciate the icebergs. We will also visit the town of Ilulissat, with its museums, cafes, craft shops, and busy fishing harbour.

DAY 4 WESTERN GREENLAND

Greenland’s west coast is simply stunning. From mighty mountains to the tiniest tundra flowers, our stop in this area will offer many outstanding features of interest. Hikers, walkers, photographers, and contemplators will all be equally delighted.

DAY 5 AT SEA — DAVIS STRAIT

Our onboard presentation series will continue as we steam across Davis Strait towards Canada. This is an excellent time to enjoy workshops, watch a documentary, and get out on deck looking for whales, seabirds, and marine wildlife.

DAY 6 MITTIMATALIK (POND INLET), NU, CANADA

Mittimatalik is a busy Arctic community in a beautiful setting. The views of nearby Bylot Island are stunning. We will have a chance to explore the town. The cultural presentation at the Community Hall is not to be missed—handcrafted goods may be available here, too.

DAY 7-11 TALLURUTIUP IMANGA (LANCASTER SOUND) & DEVON ISLAND

We will spend four days exploring Tallurutiup Imanga (Lancaster Sound), one of Canada’s newest National Marine Conservation Areas. Narwhal, beluga, and bowhead whales transit and feed in this area. We’ll cruise by ship and Zodiac in search of wildlife.

On the northern border of Tallurutiup Imanga lies Devon Island, the largest uninhabited island on Earth at over 50,000 square kilometres. The island’s geology is stunning. Flat-topped mountains, glacial valleys, and a substantial ice cap give Devon Island its unique character.

We’ll visit a number of the bays—hiking the tundra, discovering the botany, cruising a glacier face, and wildlife-spotting from ship and from shore. Once home to Inuit and their ancestors, we will visit archaeological sites with expert interpretation to learn about the human history of this now-abandoned island. We’ll also catch a glimpse of recent human history as we visit the remains of a Royal Canadian Mounted Police and Hudson’s Bay Company site at Dundas Harbour.

DAY 12 BEECHEY ISLAND

In 1845, Sir John Franklin set out from England with HMS Erebus and HMS Terror, attempting to sail through the Northwest Passage. Franklin’s crew overwintered at Beechey Island, where three of his men died.

Numerous search parties later used Beechey as a depot and rendezvous. Amundsen, Bernier, and Larsen all visited Beechey. Thomas Morgan of the HMS Investigator was buried here in 1854 alongside Franklin’s men. The graves and the ruins of nearby Northumberland House are a haunting memorial.

DAY 13 QAUUITTUQ (RESOLUTE), NU, CANADA

Qausuittuq, or “place with no dawn”, is named for its dark winters. During our time in the summer months we will experience the midnight sun, a time of no darkness.

The ending of our journey is characterized by shoreline gravel flats, rocky coastal bluffs, and deposits of glacial moraine. More significant is the origin of the hamlet. In 1953, Inuit from Inukjuak, Québec, and Mittimatalik were relocated, under false pretenses, by the Canadian government with the aim

of asserting Canadian sovereignty.

Today the community is home to just under 250 people and is an important staging point for High Arctic research, tourism, and military activities.

Here we will disembark the Ocean Endeavour, and take the charter flight to Ottawa, ON.

Numerous search parties later used Beechey as a depot and rendezvous. Amundsen, Bernier, and Larsen all visited Beechey. Thomas Morgan of the HMS Investigator was buried here in 1854 alongside Franklin’s men. The graves and the ruins of nearby Northumberland House are a haunting memorial.





THE OCEAN ENDEAVOUR DETAILS:



Maximum: 198 passengers

Outfitted with twenty Zodiacs, advanced navigation equipment, multiple lounges and a top deck observation room, the Ocean Endeavour is purpose-built for passenger experiences in remote environments. The Ocean Endeavour boasts a 1B ice class, enabling her to freely explore throughout the Arctic summer. Launched in 1982, she has had numerous upgrades, most recently in 2010 and 2014.



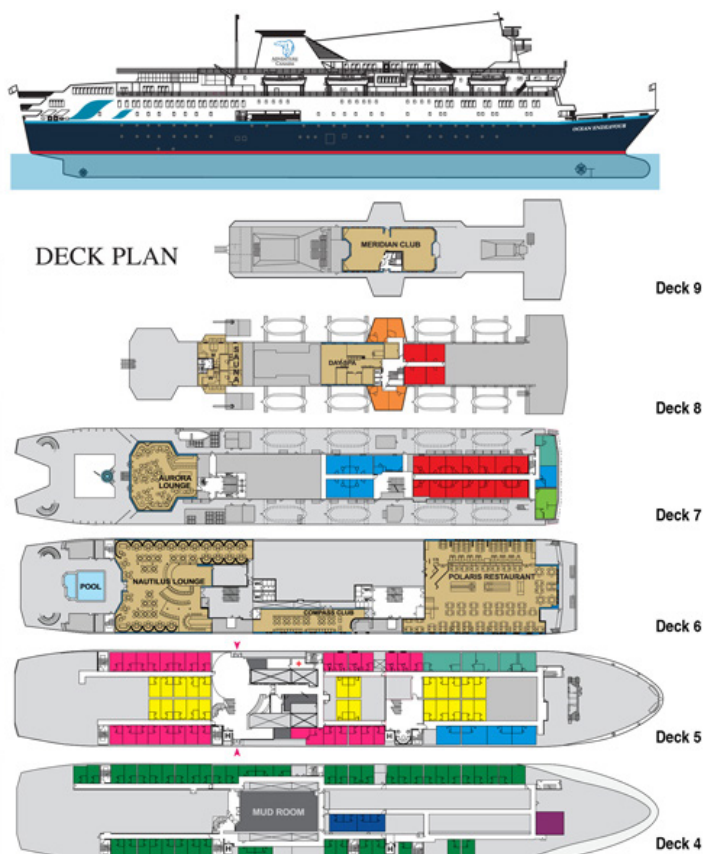
Aurora Lounge aboard the Ocean Endeavour.



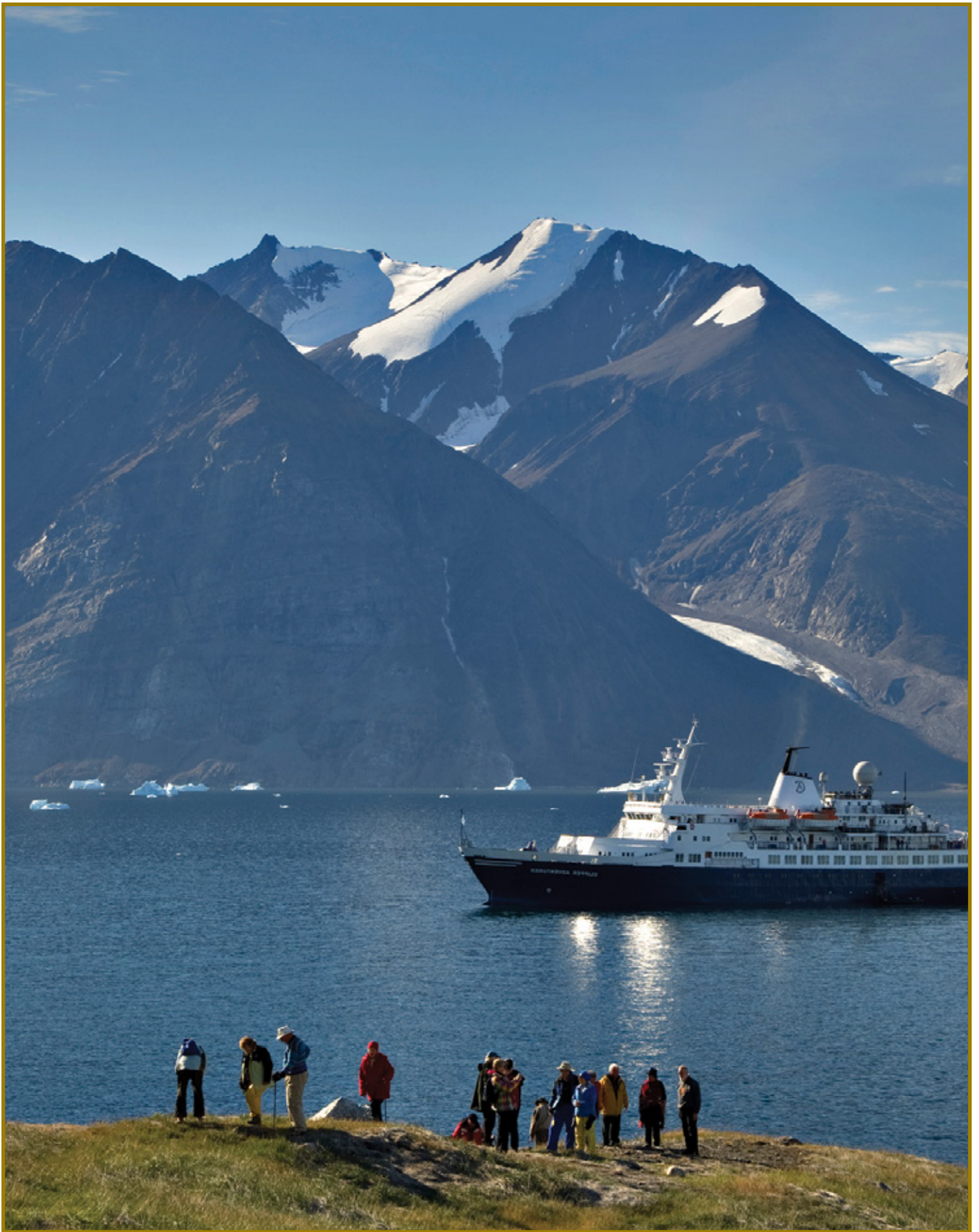
Exterior Twin Cabin aboard the Ocean Endeavour.

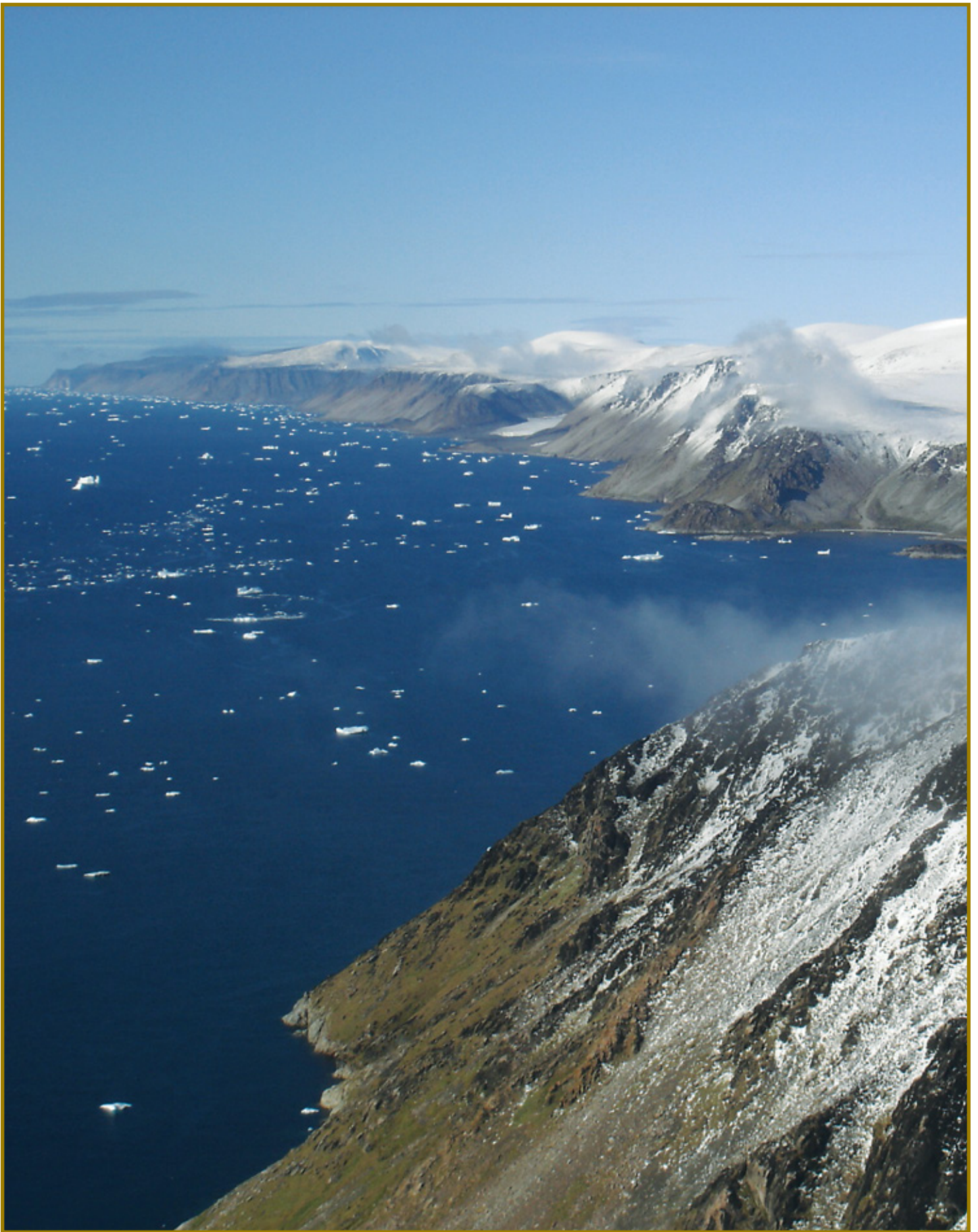
CABIN CLASS CATEGORIES

CATEGORY 2	TRIPLE
Deck four. Interior Cabin, three lower berths, private bath	
CATEGORY 3	INTERIOR TWIN
Deck five. Interior Cabin, two lower berths, private bath	
CATEGORY 4	EXTERIOR TWIN
Deck four. Porthole window, two lower berths, private bath	
CATEGORY 5	MAIN TWIN
Deck five. Picture window, two lower berths, private bath	
CATEGORY 6	COMFORT TWIN
Deck seven & eight. Picture windows (obstructed view), two lower berths or matrimonial bed, private bath, refrigerator	
CATEGORY 7	TOP DECK TWIN
Deck eight. Large picture windows (partial obstruction), matrimonial bed, private bath, refrigerator	
CATEGORY 8	SUPERIOR TWIN
Deck five & seven. Picture windows, twin or matrimonial bed, private bath, refrigerator	
CATEGORY 9	JUNIOR SUITE
Deck five & seven. Picture windows, separate sitting area, sofa, desk, refrigerator, matrimonial bed, private bath	
CATEGORY 10	SUITE
Deck seven. Picture windows overlooking the bow, separate sitting area, sofa, desk, refrigerator, matrimonial bed, private bath with full tub	









QUESTIONS & ANSWERS

1. HOW BIG ARE THE GROUPS?

The Ocean Endeavour is a 198 passenger vessel. On board you will also have between 10 to 15 resource staff.

2. WHAT IS INCLUDED IN THE TOUR PRICE?

From day 1 to disembarkation meals, entrance fees, and accommodations are included.

3. WHAT IS NOT INCLUDED IN THE TOUR PRICE?

International & charter flights, tips, Discovery Fund fee of (\$250USD). Personal expenses like alcoholic beverages, telephone calls, internet & laundry are not included and put onto their ship board account which is payable in USD the night prior to disembarkation. Ships crew gratuities are not included, we suggest between \$10-\$14 per day per passenger. This goes into a lump sum and distributed to the entire crew equally.

4. WHAT IS THE DISCOVERY FUND?

The Discovery Fund is the result of committed passengers longing for a way to give back to the regions they have visited during their expeditions. Our local supplier has made a point to support local organizations and groups focusing on the environmental, cultural and educational needs of each region you will visit. Our local supplier, in cooperation with their friends in the North, assess where the demand is the greatest and supports each cause through monetary donations. Each passenger who travels with our local supplier donates an additional \$250 USD to ensure the longevity and success of the initiatives in these regions. Throughout the voyage you will see some of the projects that we have funded over the years. Your donation goes a long way and helps ensure that many of these important organizations, many at the grassroots level, are able

to carry on. Most of these local initiatives do not have charitable status and thus do not have the ability to issue tax receipts. If it is essential for you to obtain a tax receipt for your donation, the local supplier will send your portion to an organization which has this capability.

5. ARE THESE “EDUCATIONAL” TOURS?

Yes, in the broadest sense of the word, “educational”. We visit museums and local villages. We also have talks and discussions on many aspects of the history and culture Newfoundland, but this is only one aspect of what we do. We believe that it is equally educational to meet new people on a non-commercial basis. Sometimes the most “educational” moments are spent having a cold drink with the locals .

6. HOW DO WE TRAVEL DURING THE TOUR?

We cruise on our vessel and often use zodiac’s for our adventure excursions.

7. WHAT ARE OUR ACCOMMODATIONS LIKE?

The ship offers interior and exterior cabins. All cabins have private washroom facilities, a phone for internal calls, radio, TV and air-conditioning. There are a variety of cabin categories available ranging from 9-30 m2 (100-320 sq ft). Please call for pricing and cabin availability.

8. WHAT ABOUT THE WEATHER?

We travel to Newfoundland during their fall season. In general, Newfoundland can experience temperatures between 35-55 F (1-12 C).

9. WHEN IS PAYMENT DUE?

A non-refundable deposit of \$2500 USD is due as soon as you decide to go and will reserve your place on the tour. The balance of the land payment is due 120 days before departure. Cancellation charges are applicable and these are outlined in the “Terms & Conditions” section of our brochure.

10. IS MEDICAL INSURANCE REQUIRED?

Insurance coverage is not included in the cost of your trip. Please note that medical insurance is required for this adventure with a minimum of \$500,000 coverage for evacuation insurance, including air ambulance. We strongly recommend cancellation and interruption insurance as well! ElderTreks offers comprehensive travel insurance and we are happy to provide you with a quote if you call our office. If you are purchasing insurance elsewhere, please ensure you provide the details to ElderTreks as soon as possible.



11. WHAT MEALS ARE INCLUDED?

All meals are included, starting with dinner on day 1 and finishing with breakfast on departure day.

12. WHAT SHOULD I TAKE ON THE TOUR?

There is a detailed “What to Take” list in our Trip Kit, which we will send to you after you have booked the trip.

13. CAN YOU ARRANGE MY FLIGHTS?

We would be happy to take care of your air arrangements. ElderTreks offers personalized flight itineraries, not group flights. Stop over enroute, come in a few days early, or extend your stay. Call us for a customized itinerary.

14. WHAT IF I WOULD LIKE MORE INFORMATION?

If you have any further questions about the adventure, please call our office for more details. A Trip Specialist will be happy to answer your questions. A Trip Kit containing further details on the destination will be sent to you once you have booked the trip.



