

# • THE NORTHWEST PASSAGE: EAST TO WEST •

DETAILED ITINERARY

Jan 15/24



A journey from Kangerlussuaq, Greenland to Kugluktuk, Nunavut. Travel aboard the Ocean Endeavour in comfort. Our fleet of Zodiacs will take us where the action is—the heart of history.

Our voyage begins in Greenland, home to mighty icebergs, dramatic fjords, and calving glaciers! Colourful villages offer rich culture. Crossing the Davis Strait, we'll explore the Baffin Island coast. We're on the watch for whales, birds and bears. Zodiacs stand by for excursions; visit Franklin expedition graves at Beechey Island. Follow in the wakes of Franklin, Rae, Amundsen and many more polar explorers.

Meet the Inuit who call the Arctic home. Travel with scientists, artists, musicians, local culturalists, and historians—all of whom are drawn magnetically north. Sail the great sea-route at the top of the world. The Northwest Passage calls you, too!

## FACTS & HIGHLIGHTS

- 17 days • Start in Kangerlussuaq, Greenland and finish in Kugluktuk, Nunavut • All meals on board included • Travel aboard the Ocean Endeavour • Cross the Arctic Circle as you sail the length of Sondre Stromfjord • Cruise among icebergs at Ilulissat Icefjord (UNESCO) • Visit Queen Maud Gulf, home to the wrecks of the Franklin ships, HMS Erebus and Terror • Enjoy an Inuit cultural welcome in Qikiqtarjuaq (Broughton Island) • Watch for marine mammals and wildlife in Tallurutiup Imanga (Lancaster Sound), a Marine Protected Area • Explore Nunavut's rarely visited national parks • Pass continental North America's northernmost point at Bellot Strait • Seek polar bears, seabirds, and other Arctic wildlife in pristine natural environments

## DEPARTURE DATES & PRICES FROM (Per person)

**Aug 16 – Sep 01, 2025**

<b>Triple Cabin</b>	-	<b>\$16,495 USD</b>
<b>Interior Twin</b>	-	<b>\$18,495 USD</b>
<b>Exterior Twin</b>	-	<b>\$19,995 USD</b>
<b>Main Twin</b>	-	<b>\$21,495 USD</b>
<b>Comfort Twin</b>	-	<b>\$22,995 USD</b>
<b>Select Twin</b>	-	<b>\$24,495 USD</b>

Prices do not include \$2450 USD charter flights

**Activity Level: 1**

**Comfort Level:**

Seas can be rough. Zodiac landings required.

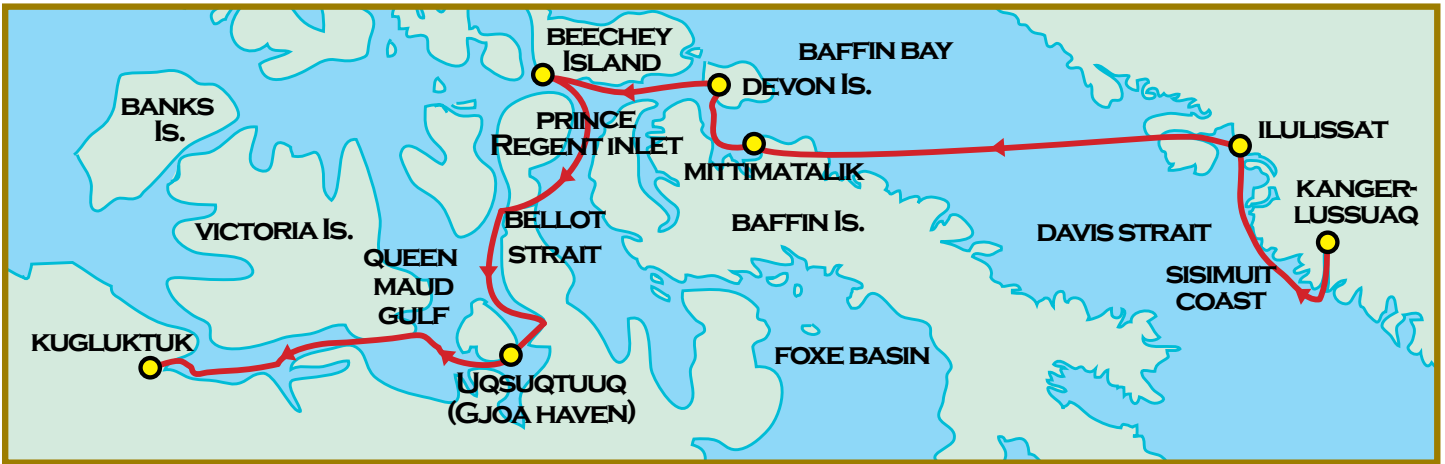
## ACCOMMODATIONS

Travel aboard the Ocean Endeavour.

**ELDER TREKS**



SMALL GROUP  
**EXOTIC ADVENTURES**  
FOR TRAVELERS 50 PLUS



This is not an ElderTreks operated tour. As such, participants on this tour are not exclusive ElderTreks clients and it may not adhere to ElderTreks' maximum size restrictions of our tours.

### **DAY 1 KANGERLUSSUAQ, GREENLAND**

Kangerlussuaq is a former US Air Force base and Greenland's primary flight hub. After our charter flight from Toronto, we will transfer to Ocean Endeavour by Zodiac.

Sondre Stromfjord is one of the longest fjords in the world: 168 kilometres of superb scenery. Steaming down this dramatic fjord we'll cross the Arctic Circle—from the north!

### **DAY 2 SISIMIUT COAST**

West Greenland's complex coastal waterways include glaciers, islands and fjords against a towering mountain backdrop. The waters are relatively warm here, due to the West Greenland Current and the sub-Arctic Location. Abundant fauna and marine life have supported human habitation here as far back as 4,500 years.

### **DAY 3 ILULISSAT**

Ilulissat means "iceberg", an apt name for this site at the outlet of the Sermeq Kujalleq glacier - a UNESCO



World Heritage Site, and the source of many of the icebergs in the North Atlantic.

We will cruise in our fleet of Zodiacs to appreciate the icebergs, and visit the town of Ilulissat, with its museums, cafes, craft shops, and busy fishing harbour.

---

## **DAYS 4-5 WESTERN GREENLAND**

Exploring by ship and Zodiac along the west coast of Greenland, we have numerous options for expedition stops, to make the most of weather and wildlife conditions. Departing Greenland, we cross Baffin Bay toward Nunavut.

---

## **DAY 6 AT SEA - DAVIS STRAIT**

As we steam toward Nunavut, our resource staff will deepen your understanding of the Arctic. This is an excellent time to enjoy workshops, watch a documentary, or get out on deck. Keep your binoculars ready for minke and humpback whales, as well as the seabirds that are sure to mark our passage.

---

## **DAY 7 MITTIMATALIK (POND INLET), NUNAVUT**

Mittimatalik is a busy Arctic community in a beautiful setting, a fascinating place to wander. The cultural presentation at the Community Hall is not to be missed—arts and crafts may be available here too.

---

## **DAY 8-10 TALLURUTIUP IMANGA (LANCASTER SOUND) & DEVON ISLAND**

We will spend three days exploring Tallurutiup Imanga (Lancaster Sound), one of the newest National Marine Conservation Areas in Nunavut. Narwhal, beluga, and bowhead whales transit and feed in this area. We'll cruise

by ship and Zodiac in search of wildlife.

On the northern border of Tallurutiup Imanga lies Devon Island, the largest uninhabited island on Earth at over fifty thousand square kilometres. Flat topped mountains, glacial valleys, and a substantial ice cap give Devon Island its unique character. We hike the tundra, cruise a glacier face, and seek wildlife from ship and by shore. Archaeological sites with expert interpretation allow us to learn about the Inuit history of this now-abandoned island. We'll visit the remains of a RCMP and Hudson's Bay Company site at Dundas Harbour.

---

## **DAY 11 BEECHEY ISLAND**

In 1845, Sir John Franklin set out from England with HMS Erebus and HMS Terror, attempting to sail through the Northwest Passage. His crew overwintered at Beechey Island—where three of his men died.

Numerous search parties later used Beechey as a depot and rendezvous. Amundsen, Bernier, and Larsen visited Beechey. Thomas Morgan of the HMS Investigator was buried there in 1854 alongside Franklin's men. The graves and the ruins of Northumberland House are a haunting memorial.

---

## **DAYS 12-13 PRINCE REGENT INLET**

This passage marks an area rich in marine and avian life. Thick-billed murre, ivory gulls, beluga, narwhal and bowhead whales reside in the ice-strewn waters. In addition to abundant wildlife, we'll delve deeper into the exploration of the Northwest Passage and mercantile efforts of the Hudson's Bay Company.

---

## **DAYS 14-16 KITIKMEOT REGION**

The traditional territory of the Netsilik Inuit, the Kitikmeot Region consists of parts of Victoria

Island, the adjacent part of the mainland as far as the Boothia Peninsula, King William Island, and the southern portion of Prince of Wales Island. Recently, the Kitikmeot Region has been in the news since the finding of the lost ships of the Franklin Expedition in its waters. It is Nunavut's least-populated region, though wildlife abounds here both in the sea and on land. We will spend our time navigating the ice-strewn waters in search of wildlife.

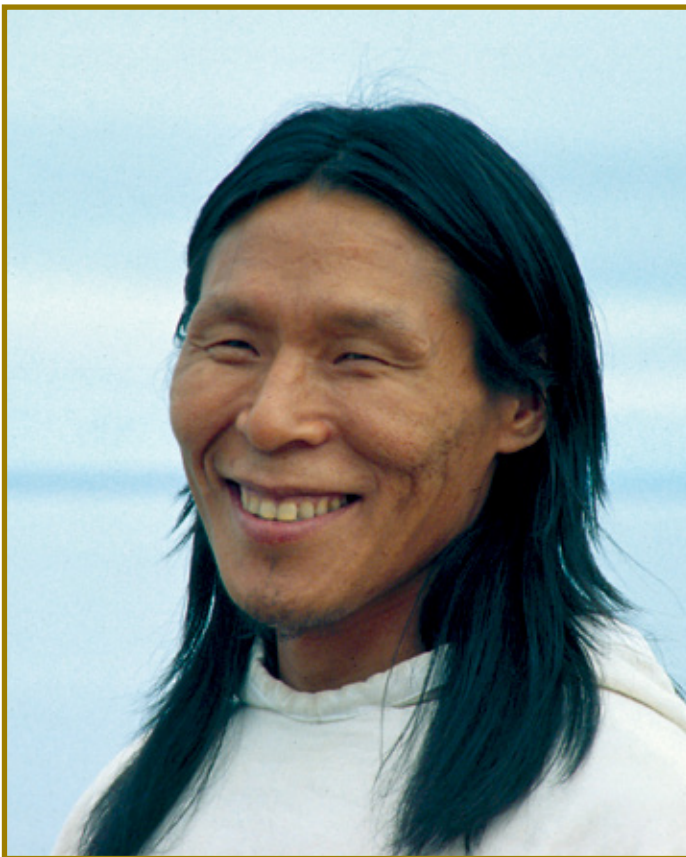
We'll also call in at Uqsuqtuuq (Gjoa Haven) home of the Guardians of Terror Bay. The European name, Gjoa Haven, honours Roald Amundsen who overwintered in the bay for two years while searching for the Northwest Passage. Amundsen became the first European to cross the Northwest Passage, thanks to the knowledge and largesse of Inuit. The community has an excellent cultural centre and is well known for carvings and wall hangings.

## **DAY 17 KUGLUKTUK (COPPERMINE), NUNAVUT**

Located at the mouth of the Coppermine River, Kugluktuk is the westernmost community in Nunavut.

Iqaluktuuttiaq (Cambridge Bay), NU is an alternate disembarkation point, and may be used based on sea, ice and weather conditions.

Today we will disembark the Ocean Endeavour and make our way to the airport to meet our charter flights to Yellowknife, NT.





## THE OCEAN ENDEAVOUR DETAILS:



Maximum: 198 passengers

Outfitted with twenty Zodiacs, advanced navigation equipment, multiple lounges and a top deck observation room, the Ocean Endeavour is purpose-built for passenger experiences in remote environments. The Ocean Endeavour boasts a 1B ice class, enabling her to freely explore throughout the Arctic summer. Launched in 1982, she has had numerous upgrades, most recently in 2010 and 2014.



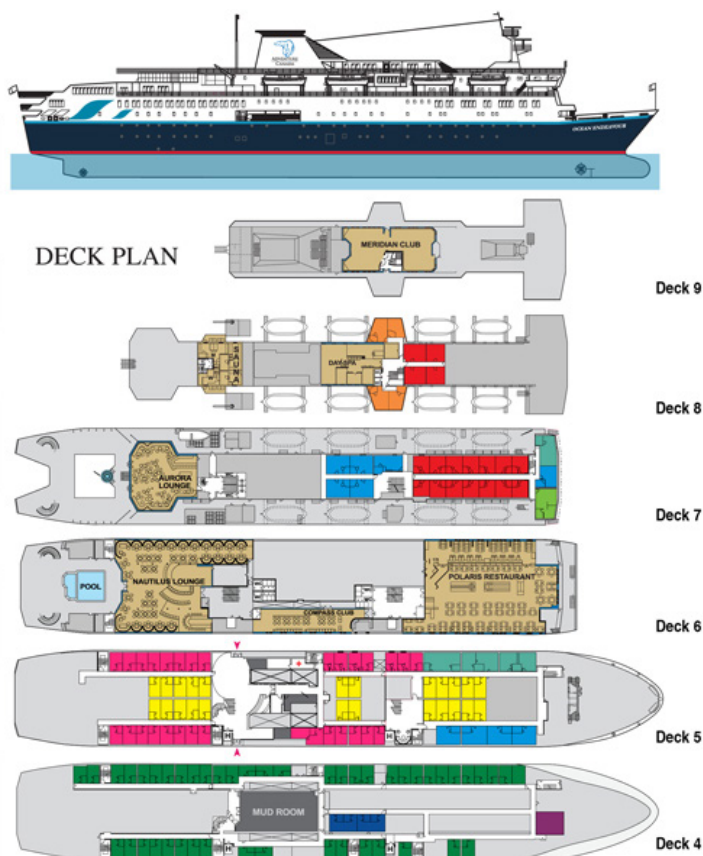
Aurora Lounge aboard the Ocean Endeavour.



Exterior Twin Cabin aboard the Ocean Endeavour.

## CABIN CLASS CATEGORIES

<b>CATEGORY 2</b>	<b>TRIPLE</b>
Deck four. Interior Cabin, three lower berths, private bath	
<b>CATEGORY 3</b>	<b>INTERIOR TWIN</b>
Deck five. Interior Cabin, two lower berths, private bath	
<b>CATEGORY 4</b>	<b>EXTERIOR TWIN</b>
Deck four. Porthole window, two lower berths, private bath	
<b>CATEGORY 5</b>	<b>MAIN TWIN</b>
Deck five. Picture window, two lower berths, private bath	
<b>CATEGORY 6</b>	<b>COMFORT TWIN</b>
Deck seven & eight. Picture windows (obstructed view), two lower berths or matrimonial bed, private bath, refrigerator	
<b>CATEGORY 7</b>	<b>TOP DECK TWIN</b>
Deck eight. Large picture windows (partial obstruction), matrimonial bed, private bath, refrigerator	
<b>CATEGORY 8</b>	<b>SUPERIOR TWIN</b>
Deck five & seven. Picture windows, twin or matrimonial bed, private bath, refrigerator	
<b>CATEGORY 9</b>	<b>JUNIOR SUITE</b>
Deck five & seven. Picture windows, separate sitting area, sofa, desk, refrigerator, matrimonial bed, private bath	
<b>CATEGORY 10</b>	<b>SUITE</b>
Deck seven. Picture windows overlooking the bow, separate sitting area, sofa, desk, refrigerator, matrimonial bed, private bath with full tub	











## QUESTIONS & ANSWERS

### 1. HOW BIG ARE THE GROUPS?

The Ocean Endeavour is a 198 passenger vessel. On board you will also have between 15 to 20 resource staff.

### 2. WHAT IS INCLUDED IN THE TOUR PRICE?

From day 1 to disembarkation meals, entrance fees, and accommodations are included.

### 3. WHAT IS NOT INCLUDED IN THE TOUR PRICE?

International & charter flights, and tips. Personal expenses like alcoholic beverages, telephone calls, internet & laundry are not included and put onto their ship board account which is payable in USD the night prior to disembarkation. Ships crew gratuities are not included, we suggest between \$10-\$14 per day per passenger. This goes into a lump sum and distributed to the entire crew equally.

### 4. ARE THESE “EDUCATIONAL” TOURS?

Yes, in the broadest sense of the word, “educational”. We visit museums and local villages. We also have talks and discussions on many aspects of the history and culture in the areas travelled, but this is only one aspect of what we do. We believe that it is equally educational to meet new people on a non-commercial basis. Sometimes the most “educational” moments are spent having a cold drink with the locals.

### 5. HOW DO WE TRAVEL DURING THE TOUR?

We cruise on our vessel and often use zodiac’s for our adventure excursions.

### 6. WHAT ARE OUR ACCOMMODATIONS LIKE?

The ship offers interior and exterior cabins. All cabins have private washroom facilities, a phone for internal calls, radio, TV and air-conditioning. There are a variety of cabin categories available ranging from 9-30 m2 (100-320 sq ft). Please call for pricing

and cabin availability.

### 7. WHAT ABOUT THE WEATHER?

We travel during the northern summer season. In general, we can experience temperatures between 35-55 F (1-12 C).

### 8. WHEN IS PAYMENT DUE?

A non-refundable deposit of \$2500 USD is due as soon as you decide to go and will reserve your place on the tour. The balance of the land payment is due 150 days before departure. Cancellation charges are applicable and these are outlined in the “Terms & Conditions” section of our brochure.

### 9. IS MEDICAL INSURANCE REQUIRED?

Insurance coverage is not included in the cost of your trip. Please note that medical insurance is required for this adventure with a minimum of \$500,000 coverage for evacuation insurance, including air ambulance. We strongly recommend cancellation and interruption insurance as well! ElderTreks offers comprehensive travel insurance and we are happy to provide you with a quote if you call our office. If you are purchasing insurance elsewhere, please ensure you provide the details to ElderTreks as soon as possible.

### 10. WHAT MEALS ARE INCLUDED?

All meals are included, starting with dinner on day 1 and finishing with breakfast on departure day.

### 11. WHAT SHOULD I TAKE ON THE TOUR?

There is a detailed “What to Take” list in our Trip Kit, which we will send to you after you have booked the trip.

### 12. CAN YOU ARRANGE MY FLIGHTS?

We would be happy to take care of your air arrangements. ElderTreks offers personalized flight itineraries, not group flights. Stop over enroute, come in a few days early, or extend your stay. Call us

for a customized itinerary.

### 13. WHAT IF I WOULD LIKE MORE INFORMATION?

If you have any further questions about the adventure, please call our office for more details. A Trip Specialist will be happy to answer your questions. A Trip Kit containing further details on the destination will be sent to you once you have booked the trip.

