

# .....SAILING FRENCH POLYNESIAN ISLANDS.....

## DETAILED ITINERARY

Sep 18/25

Lush and green Uo Pou Island.

**Now includes Bora Bora**

### DEPARTURE DATES

Jan 23 – Feb 04, 2027*	Jul 27 – Aug 08, 2027
Feb 11 – Feb 23, 2027*	Aug 12 – Aug 24, 2027
Feb 27 – Mar 11, 2027	Aug 28 – Sept 09, 2027
Mar 16 – Mar 28, 2027*	Sept 18 – Sept 30, 2027
Apr 03 – Apr 15, 2027	Oct 05 – Oct 17, 2027
May 06 – May 18, 2027	Oct 21 – Nov 02, 2027
May 22 – Jun 03, 2027	Nov 06 – Nov 18, 2027
Jun 08 – Jun 22, 2027	Nov 23 – Dec 05, 2027
Jun 24 – Jul 07, 2027	
Jul 10 – Jul 22, 2027	

The lush, jagged volcanic islands of the Marquesas are French Polynesia's most spectacular island chain. You can imagine their raw beauty, the welcoming people and their mysterious stone tikis by reading the adventures of Paul Gauguin, Herman Melville, Jack London, Robert Louis Stevenson and Thor Heyerdahl. Today, there is no better way to explore these enchanting islands than by passenger/freighter.

Your days will be filled with adventure, as we journey to the Tuamotu and Marquesas Islands. Well-trained guides will take you hiking to ancient archaeological sites. Enjoy swimming, snorkeling, scuba diving and horseback riding. You'll visit charming

### FACTS & HIGHLIGHTS

- 13 days • Start and finish in Papeete, Tahiti • All meals on ship and land included • Visit Bora Bora • Guided excursions included • Visit volcanic amphitheater in Nuku Hiva Bay • Visit grave site of Paul Gauguin on Hiva Oa • Visit Fatu Hiva, center of Marquesian culture • Discover island of wild horses - Ua Huka

**2027 Prices start from: \$6234 USD\***

**\*Standard cabin, twin share. 10% off select departures.**

See pg. 2 for more categories.

The price does not include Tourism Tax, Port/Cruise fees and transfers. This trip is not exclusive to ElderTreks.

Single occupancy: add 50% (will be limited to no more than 15 per sailing)

**Activity Level: 2**

**Comfort Level:**

Seas can be rough. Shore landings (using traditional style whaleboats).

### ACCOMMODATIONS

Travel aboard the upscale passenger & cargo freighter, Aranui 5. Cabins range from standard to deluxe staterooms, as well as a variety of suites, all with private facilities.

**ELDERTREKS**



**SMALL GROUP  
EXOTIC ADVENTURES  
FOR TRAVELERS 50 PLUS**

villages and see local artisans making intricately-carved wooden bowls, war clubs and tapa - a traditional bark cloth. Very little has changed in these untouched islands. Visitors are rare but very welcome!

**Important:** We strongly recommend that you arrive 1 day early. If there are any flight delays and you miss the embarkation of the Aranui, ElderTreks & the Aranui are not responsible for lost services or extra expenses incurred to connect with the ship.

## DAY 1 • ARRIVE IN PAPEETE, TAHITI

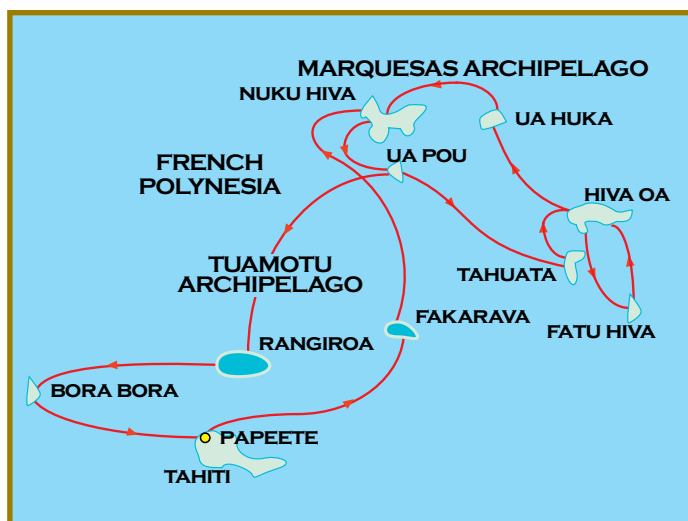
A charming bit of France, Papeete is the French capital of Polynesia from where you will begin your sailing adventure. The ship departs from the dock at 12:00 PM.

## DAY 2 • FAKARAVA

Classified as a Biosphere Reserve by UNESCO for the preservation of rare species, Fakarava is the second largest atoll in French Polynesia. After a buffet on board, the Aranui will disembark at the dock of "Rotoava". Passengers will have time to discover its small village, the church built of coral, local crafts and a demonstration of the virtues of coconut. Enjoy a day of relaxation, sun and beach, swimming or snorkeling among multicolored tropical fish.

## DAY 3 • AT SEA

A day to relax at the Pool Deck or in the comfort of our air-conditioned lounge. Or why not just enjoy the view of the South Pacific Ocean during our crossing to the fascinating Marquesas Islands. Lectures on the Culture and History of the Marquesas Islands will make you go back in time and give you a complete overview of this ancient



## Prices (in USD)

Prices are per person based on double occupancy and include 3 meals with complimentary wine, guided excursions, picnic and meals on shore. Optional excursion such as scuba diving, horseback riding, and helicopter tours are not included.

**2027 Prices: Double Occupancy.**

**Single Occupancy: add 50% surcharge of cabin price (+ applicable taxes)**

<b>Stateroom</b> with private facilities Add: Total Cruise Taxes: \$700	<b>\$6,234</b>
<b>Deluxe</b> with private facilities Add: Total Cruise Taxes: \$780	<b>\$8,035</b>
<b>Superior Deluxe</b> with private facilities Add: Total Cruise Taxes: \$809	<b>\$8,666</b>
<b>Jr. Suite</b> with private facilities Add: Total Cruise Taxes: \$822	<b>\$8,945</b>
<b>Premium Suite</b> with private facilities Add: Total Cruise Taxes: \$831	<b>\$9,153</b>
<b>Royal Suite</b> with private facilities Add: Total Cruise Taxes: \$850	<b>\$9,588</b>
<b>Presidential Suite</b> with private facilities Add: Total Cruise Taxes: \$934	<b>\$12,763</b>

\* Children tariff: 50% of base tariff \* Adults sharing cabin with Pullman (3 beds) – third person less 25% from full tariff.  
\* Single occupancy: add 50% \* Children (14 years old and under) will be limited to no more than 15 per sailing

This is not an ElderTreks operated tour. As such, participants on this tour are not exclusive ElderTreks clients and it may not adhere to ElderTreks' maximum size restrictions of our tours.

Picturesque setting of a sheltered bay, near Hakahau Village, Ua Pou island.



civilization. During the cruise, you will also have the opportunity to learn how to move your hips like a true Tahitian! The fiery Polynesian crew, proudly present their way of life and entertain you with Polynesian songs and rhythms on their ukulele, guitars and drums. Before going to bed, set your watch 30 minutes in advance, we switch to Marquesas time.

---

#### **DAY 4 • NUKU HIVA (TAIOHAE/HATIEU/TAIPIVAI)**

While the Aranui is unloading, you can explore Taiohae, the small administrative capital of the Marquesas. Taiohae Bay is where writer Herman Melville then a 23-year-old sailor and buddy jumped off a whaler in 1842. After breakfast, passengers will disembark and will take the 4x4 that will be waiting for them for the day's excursion. Our first stop will be a visit to Taiohae Cathedral. You can visit the Cathedral or go to the market to buy handicrafts. Then, we will visit the archaeological site of "Tohua Kamuihei" with its giant banyan trees and petroglyphs. Your first introduction to traditional Marquesan cuisine will be served for lunch. Local music during the meal will provide a

great atmosphere. Your excursion will continue south to Taiohae with its spectacular bay, a giant volcanic amphitheater dominated by towering cliffs dotted with waterfalls. Back to Taiohae village, you will also find banks and shops. You can return to the ship from the village on foot or by car. Tonight, we enjoy a Polynesian evening with plancha buffet around the pool or at the restaurant depending on weather conditions.

---

#### **DAY 5 • UA POU (HAKAHAU)**

From the bridges, you will see the mountain spits unique to Ua Pou. As the crew unloads supplies, cement, sugar, and loads bags of copra (dried coconuts) and fruit, explore the picturesque village of Hakahau and its church with a hand-carved wooden platform. Meet the island's talented sculptors and artists, climb to the Croix for stunning views of the mountains, lush valleys and the main village. Another delicious Marquesan lunch will be served: breadfruit, a staple of the Marquesan with goat curry (a specialty of the Marquesas Islands), raw fish marinated in lemon juice and coconut milk, taro and red bananas. Enjoy an excellent dance performance, including the traditional "bird dance", at UA POU.



## DAY 6 • HIVA OA (ATUONA)

The Aranui will anchor early at the Tahauku dock in Atuona, where you'll have time to explore the village, the second largest in the Marquesas. This is where Paul Gauguin lived and created some of his work. You can also visit the colonial store where he bought his bread, as well as a replica of his infamous "House of Pleasure" and the Museum. As you walk up the hill to the cemetery, you'll have a breathtaking view of the motu Hanakee. Beneath a huge frangipani tree is a gravestone with the simple words: Paul Gauguin 1903. Nearby is the grave of another famous European who also fell in love with Hiva Oa: Belgian singer-songwriter Jacques Brel, who died in 1978.

## DAY 7 • HIVA OA (PUAMAU) - TAHUATA (VAITAHU)

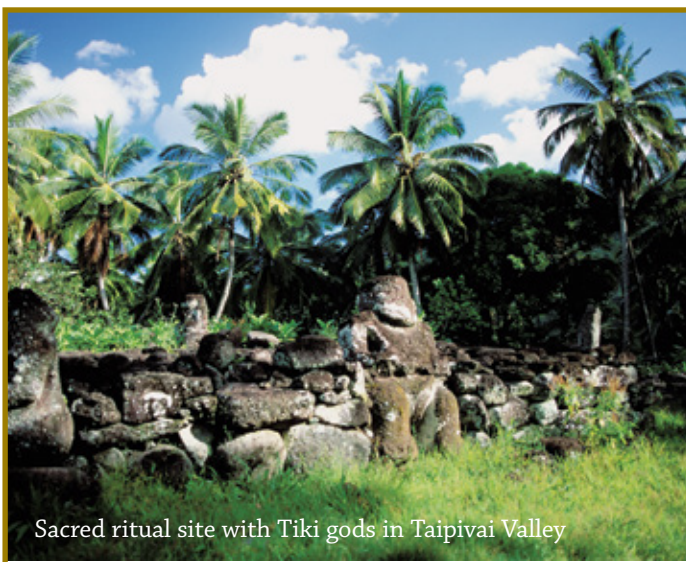
While the names Gauguin and Brel are inseparable from Hiva Oa, the soul of the island is to be found in the Puamau valley. At the archaeological site of I'ipona (also known as Lipona), every nook and cranny is an enchantment. Located at the foot of the Toea peak at the island's northeastern tip, the site is home to several tiki. Among them is the

largest tiki in Tahiti Et Ses Îles: Takaii, standing 2.57 metres high. You'll also come across Makii Taua te Pepe, a recumbent tiki measuring 1.75 metres long and 1.20 metres high.

In the afternoon, the Aranui will anchor in the small bay of Tahuata. The only access is by sea, as there is no airport on Tahuata. On this leaf-shaped island, the air is thick with the scent of Tahitian tiare, frangipani and history. In 1595, Spanish explorers landed in the village of Vaitahu and opened fire on a crowd of curious islanders, killing around 200. Tahuata was also the site of the first French colony in the Marquesas in 1842. The large church, built by the Vatican, is decorated with fine Marquesan sculptures and magnificent stained-glass windows symbolizing the Virgin Mary. Tahuata is famous for its exquisite helmet shell and bone carvings. There's plenty to choose from in the village.

## DAY 8 • FATU HIVA (OMOA - HANAVAVE)

Fatu Hiva, the most lush and remote of the Marquesas Islands, is also a Marquesan craft centre. In the village of Omoa, the women will show you how to make tapas by crushing the bark of paper mulberry, banyan or bread tree but also the making









of 'Umuhei, an island herbal blend used to perfume their hair. After visiting the village, the most sporty passengers can opt for a 15km hike that will take them from Omoa to Hanavave, offering breathtaking views of the high cliffs. Lunch will be served at the top. Non-hikers will sail aboard the Aranui, from Omoa to Hanavave to Virgin Bay, considered one of the most beautiful bays in the world. Meet ashore for a tour of the village and to welcome hikers.

### **DAY 9 • UA HUKA (VAIPAEE - HANE - HOKATU)**

This island, which saw the construction of the Marquesas' first airstrip in 1972, is largely arid and home to numerous wild horses, goats and pigs. In the early hours of the morning, the Aranui will perform an impressive maneuver, a 180-degree turn in the magnificent "Invisible Bay" of Vaipae. A maneuver requiring the full dexterity of captain and crew, it's not to be missed. Back in your 4x4 to explore the island, stopping for breathtaking views, visit the arboretum born of the passion of the island's former mayor, before reaching the beautiful village of Hane. Lunch will be served in a local family restaurant. Discover some of the island's specialties, including handicrafts, wood carvings and engraved coconut shells. After lunch, return on board by 4x4. For the more adventurous, a

3km walk back from the arboretum awaits. Make sure you're on deck, as the Aranui will sail all along the Ua Huka coast for more magnificent views.

### **DAY 10 • AT SEA**

A day to recover from the emotions of the Marquesas archipelago. During our crossing to the magnificent Tuamotu islands, conferences and activities will be offered throughout the day.

Before going to bed, set your watch back 30 minutes to Tahitian time.

### **DAY 11 • RANGIROA**

Watch from the decks as we approach and arrive at the largest atoll in French Polynesia, and the second largest in the world. You may spot playful dolphins greeting the ship as we enter Tiputa Pass, one of Rangiroa's passes. Glass-bottom boat and scuba diving excursions are available (registration at reception). Scuba diving here is rated among the best in the world (certified divers only). If you decide not to visit, enjoy Rangiroa's white sandy beach and translucent lagoon. The local "mamas" will have an excellent display of shell necklaces, chains and key chains, and other small souvenirs for sale on the



Paul Gauguin's tombstone



Bay of Virgins, Hanavave village on Fatu Hiva island

beach. The Aranui will depart at lunchtime and sail to the mystical island of Bora Bora.

## **DAY 12 • BORA BORA**

Arriving in Bora Bora's world-famous lagoon of opalescent blues and greens, you'll be greeted by the majestic "Mont Otemanu", the island's highest peak. In this perfect island paradise, you can enjoy a day at the beach and a barbecue on a private Motu surrounded by crystal-clear waters, the "Motu Tapu". You can also choose from a variety of optional excursions at extra cost: scuba diving, lagoon tours

by boat and pirogue, swimming with sharks and rays! Bora Bora was an American military outpost during the Second World War, and remnants of the war such as cannons and bunkers can be seen on the tour. Evening departure for Papeete.

## **DAY 13 • MORNING ARRIVAL IN PAPEETE, TAHITI**

This is the end of our journey. It is time to say Nānā! (goodbye) to your fellow travellers, the Polynesian staff and the Aranui guides.



Watch the sunset over Hiva Oa island



## ABOUT THE ARANUI 5:

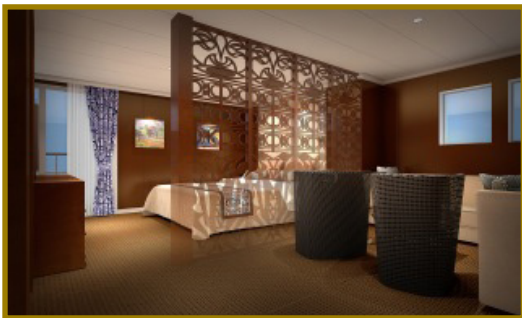


**The Aranui 5** can accommodate up to 258 passengers. With a high staff to passenger ratio guests can enjoy meeting fellow travelers in an atmosphere of warmth and intimacy.

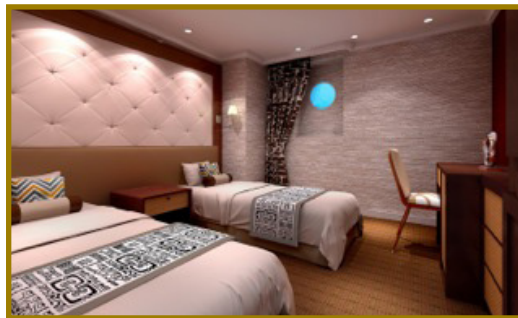


*Dining Room*

## ARANUI 5 PLAN



*Suite*



*Standard Cabin*

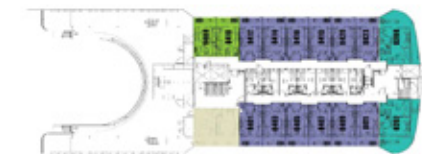
<span style="color: #ff69b4;">■</span>	Presidential Suite
<span style="color: #00ced1;">■</span>	Royal Suite
<span style="color: #00bfff;">■</span>	Premium Suite
<span style="color: #ff00ff;">■</span>	Suite without balcony
<span style="color: #9370db;">■</span>	Superior Deluxe
<span style="color: #90ee90;">■</span>	Deluxe
<span style="color: #ffff00;">■</span>	Stateroom
<span style="color: #ffa500;">■</span>	Class C

### Public Areas

- Gym
- SPA
- Video & Computer Room
- Boutique
- Restaurant
- Lounge on Boat Deck
- Conference Rooms
- Veranda/ Lounge/Library/ Shop
- Swimming Pool/Whirl Pool
- 4 bars
- Dancing room
- 2 lifts/elevators



**SKY BAR DECK**  
Presidential Suite  
Superior Deluxe  
Deluxe



**SUN DECK**  
Royal Suite  
Superior Deluxe  
Deluxe



**Pool Deck**  
Royal Suite  
Premium Suite  
Deluxe



**Veranda Deck**  
Royal Suite  
Premium Suite  
Suite without balcony



**Boat Deck**  
Royal Suite  
Stateroom



**Upper Deck**  
Superior Deluxe  
Class C



**Main Deck**  
Superior Deluxe  
Stateroom



**Lower Deck**  
Stateroom





Religious sanctuary...







## QUESTIONS & ANSWERS

### 1. HOW BIG ARE THE GROUPS?

The Aranui 5 can carry a maximum of 258 passengers. To explore such a region with just a small number of fellow passengers from all over the world is a real luxury and will help to make your voyage of discovery and adventure a truly unforgettable experience. You will be joined by other international passengers of various ages. There will not be an ElderTreks escort on-board. You will be well-cared for by the crew of the Aranui 5.

### 2. WHAT IS INCLUDED IN THE TOUR PRICE?

In addition to your cabin, your voyage includes: all meals, on-board guest lecturers, guided shore excursions, use of the ships swimming pool, library, lounges and gym. Horseback riding, scuba diving and helicopter flights are not included but may be purchased on-board at an additional cost.

### 3. WHAT IS NOT INCLUDED IN THE TOUR PRICE?

Airfare, transfers between the ship and airport, tourism tax, cruise tax, low sulphur fuel surcharge, port fee, baggage, cancellation and medical insurance (which is strongly recommended) excess baggage charges and all items of a personal nature such as ship board purchases, liquor, laundry, telecommunication charges, gratuities and optional excursion (horseback riding, scuba diving, helicopter flights.)

### 4. TRAVEL INSURANCE

Please note that travel insurance is not included in the cost of the program. We strongly recommend that you purchase a fully inclusive policy that will cover for cancellation, any possible medical emergency, and possible evacuation. ElderTreks offers a fully comprehensive policy to insure you fully, please call for details.

### 5. HOW DO WE TRAVEL DURING THE TOUR?

We sail aboard the Aranui 5, a custom built 125m long passenger cargo ship. The Aranui 5 maintains the warmth and intimacy of the Aranui heritage, with a high staff to passenger ratio. Unlike larger boats, it's easy to meet fellow guests.

The spacious cabins are tastefully designed with windows, queen or twin beds, bathrooms with showers, personal

safes, mini bars and are fully air conditioned. Deluxe cabins and suites are larger and feature additional amenities with picture windows. The suites have balconies with your own private panorama. The large dining room offers views as well as varied menus.

On board time passes quickly, with two charming bars, two lounges, swimming pool, library and well equipped gym. There is a full program of activities and guest lecturers to enhance your sailing experience.

### 6. HOW MUCH TIME DO WE SPEND SAILING AND ASHORE?

Every voyage is different, even though the destinations are the same. Visits ashore are limited to the time required by cargo operators and port restrictions. Port time may range from just a few hours to a day or more. Shore excursions may be available at some ports of call. It's up to you how much time you spend on the ship. You may spend your entire stay relaxing in the comfort of the ship, or every minute enjoying outdoor activities, visiting historical sites and stunning vistas.

### 7. WHAT ARE THE MEALS LIKE?

Meals are served in an informal, family-styled setting in our dining facilities. Depending upon the number of passengers booked per voyage, there may be two seatings per meal scheduled. Dressing for dinner means a pareo (wrap around sarong skirt) or shorts, sandals and a hibiscus blossom behind the ear!

### 8. WHAT ABOUT WEATHER?

The Polynesian Islands have warm tropical temperatures all year round. Winter season is from March to October and temperatures are in the high 70's°F. Summer is from November to March and temperatures are the 80's°F with increased humidity and periodic rains.

### 9. WHEN IS PAYMENT DUE?

A 30% deposit is due at the time of booking with your final payment being due 150 days prior to departure. Deposits can be made by check and/or credit card. Final payment can be made by check or credit card. Cancellations received 150 days prior to departure are subject to a \$750 USD administration fee. Cancellations received 150 – 91 days before departure are subject to 50% non refundable. For cancellations received 90 – 0

days before departure, all monies will be forfeited. For these reasons you are strongly encouraged to obtain trip cancellation insurance. Cancellation information is outlined in the Terms & Conditions section of your brochure.

### 10. CAN YOU ARRANGE MY FLIGHTS?

We would be happy to take care of your air arrangements. ElderTreks offers personalized flight itineraries — not group flights. Stop over en route, come in a few days early, or extend your stay. Call us for a customized itinerary.

### 11. WHAT IF I WOULD LIKE MORE INFORMATION?

If you have any further questions about the trip, please do not hesitate to contact our office for additional information. A Trip Kit containing further details on the destination will be sent to you once you have booked the trip.



Ride the famed Marquesan horses...