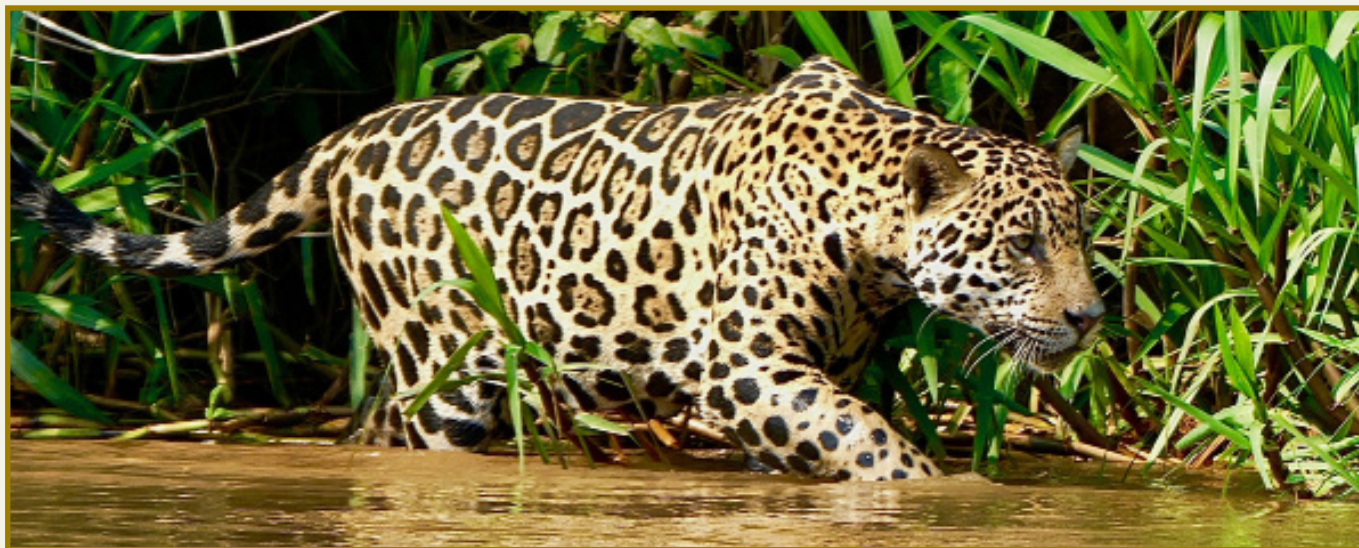


# WILD BRAZIL

DETAILED ITINERARY

RIVERS, RAINFORESTS AND WILDLIFE

Apr 24/24



Hear the thunder of Iguazu Falls and enjoy a NEW unique opportunity to see the elusive jaguar in the wild! Travel to the Pantanal, one of the richest biological zones on Earth. Visit cultural Sao Paulo, and explore the crystal blue waters of Nobres. Cruise along the gentle tributaries of the Amazon and finish the journey in Rio, one of the world's most beautiful cities.

Our journey starts at arguably the most beautiful waterfalls in the world, Iguazu Falls, with a panoramic view from the Brazilian side and an up-close, misty look from the Argentinian side. In the Pantanal, we search for wildlife by day and rest comfortably in an ecolodge by night.

The Amazon Basin is a river-sea and vast forest covering over half of Brazil. The region is one of the Earth's greatest natural masterpieces and features 50,000 miles of navigable waterways, the Earth's largest forest and over 15,000 animal species. Changing scene from Brazil's natural

## FACTS & HIGHLIGHTS

- 16 land days • Maximum 16 travelers • Start in Iguazu and finish in Rio • All meals included • Includes 3 internal flights • Enjoy boat safaris in search of jaguars • Visit Iguazu Falls from Brazilian and Argentinian sides • Swim, snorkle and relax at the crystal blue waters of Nobres • View incredible wildlife during Pantanal safaris • Explore the diverse flora and fauna of the Amazon • Enjoy the sites of Rio de Janeiro

## DEPARTURE DATES & PRICE

**Sep 14 - Sep 29, 2025** - **\$10995 USD**

**Activity Level: 2**

**Comfort Level:** Some rough roads and long travel days.

## ACCOMMODATIONS

Comfortable hotels and lodges with private bathrooms. (The lodge on Day 4, 5, 6 has limited number of rooms. Singles may have to share depending on group size.)

**ELDERTREKS**



SMALL GROUP  
**EXOTIC ADVENTURES**  
FOR TRAVELERS 50 PLUS

wonders, we move to the urban highlights of Rio de Janeiro to explore one of the world's most exciting and vibrant cities.

### **DAY 1 ARRIVAL IGUAZU FALLS, BRAZIL**

Upon arrival in Iguazu Falls, Brazil, you are met and transferred to our hotel in Iguazu Falls. Tonight, our group meets for dinner and orientation.

Overnight in Iguazu Falls, Brazil.

### **DAY 2 IGUAZU FALLS - THREE BORDERS LANDMARK, ARGENTINEAN SIDE**

Iguazu Falls is a UNESCO World Heritage Site and is best witnessed from both sides of the river gorge. Today, we explore the Argentine side making a stop at the Three Borders Landmark where Brazil, Argentina and Paraguay meet. Upon arriving at the Iguassu National Park we will have the opportunity to ride the ecological trains stopping at several points of interest including Cataras Station and Devils Throat Station from where we will have spectacular views of the falls.

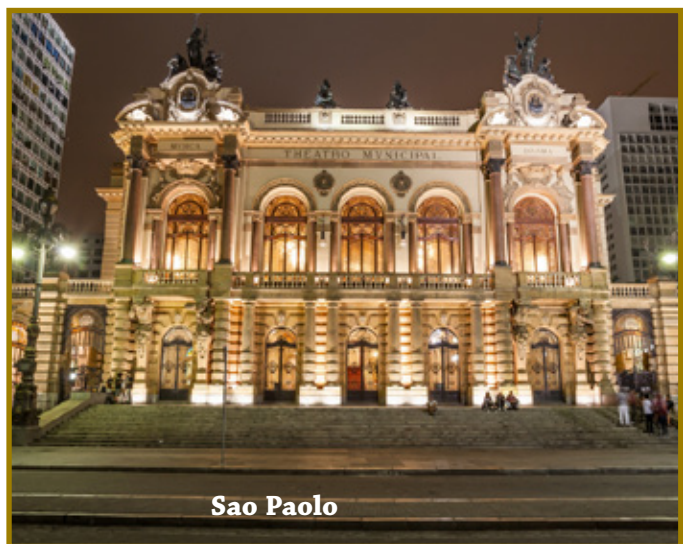
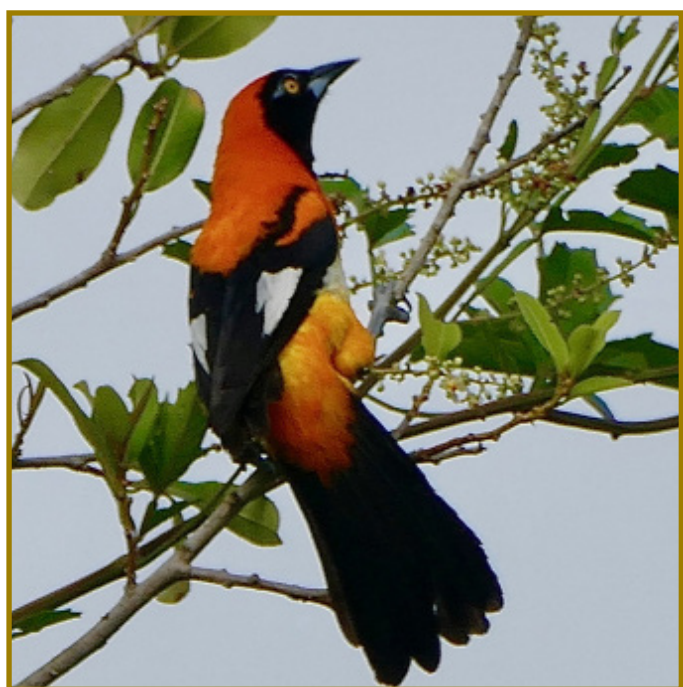
Overnight in Iguazu Falls, Brazil

### **DAY 3 IGUAZU FALLS - BRAZILIAN SIDE, FLY TO SAO PAULO**

Today we will enjoy the Brazilian side of the falls and take in the panoramic views by walking along a gently sloping trail that provides a wide perspective of the falls. The trail leads you to an incredible platform that places you amidst the most thunderous cascades at Iguazu.

After lunch, we fly to Sao Paulo where we will enjoy a short city tour including an opportunity to walk around the Vila Madalena neighborhood, populated by young Brazilian locals.

Overnight in Sao Paulo.







## **DAY 4 FLY TO CUIABÁ, TO AMAZON REGION**

After breakfast, we depart to the airport for our flight to Cuiabá. Upon arrival, meet your local host guide, enjoy lunch and then depart for the Amazon ecosystem. Enroute, you can see the transition from savannah to Amazon forest.

Arrival by late afternoon. Welcome drink and check-in.

Overnight in the Amazon.

## **DAY 5 EXPLORING THE AMAZON**

After breakfast, we follow the trails through the area, getting to know not only the local flora and fauna but also the history of the rubber industry – a former important part of the local economy. Our hike will be followed by a fish barbecue.

Later, we will have the option to canoe down the Claro River, exploring Anaconda Lake and enjoying the solitude of the jungle and its different life

forms including muscovy duck, long tailed tyrant, cormorant, Amazon kingfisher, green and rufous kingfisher, swallow tanager and herons to name a few.

Overnight in the Amazon.

## **DAY 6 AMAZON**

After breakfast, lush trails will take us deeper into the forest, where we will be shown more of its exuberant flora and fauna. There is a good chance of seeing a tapir, the largest mammal in South America, as well as numerous birds such as the solitary tinamou, royal flycatcher, silver beaked tanager, among others.

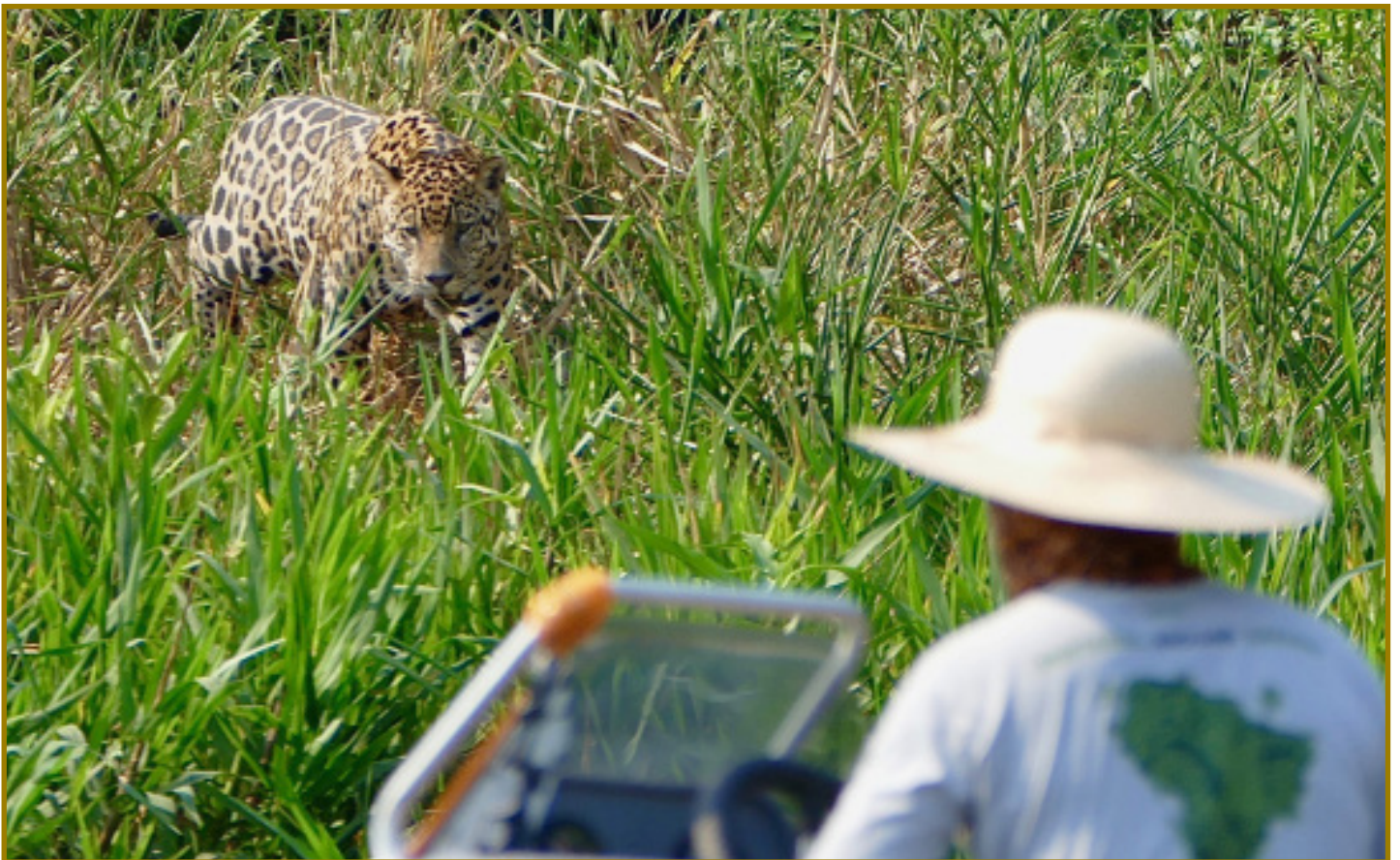
Overnight in the Amazon.

## **DAY 7 FROM AMAZON TO SAVANNAH**

After breakfast we depart for Nobres in Brazil's savannah region. Just outside of Nobres, we can











enjoy a relaxing swim or snorkle as the Salobra River's gentle current transports us for a kilometer through the crystal blue waters.

Overnight in Nobres.

---

## **DAY 8 CRYSTALLINE BLUE POOLS & WATERFALLS OF NOBRES**

After breakfast we drive to the beautiful waterfall of Serra Azul and the watering place of Balneario Estivado. Here we have the opportunity to swim or snorkle with schools of piraputangas.

After lunch we depart for the Rio Triste, where we can again enjoy the slow moving currents taking us through the stunning calcareous rock formations in the exquisite crystalline blue waters.

Our final activity of the day includes a visit to Lagoa das Araras, where we have the opportunity to see macaws and enjoy a beautiful sunset.

Return to the pousada for dinner.

Overnight in Nobres.

---

## **DAY 9 TO PANTANAL REGION**

After breakfast, we check-out and drive to the wildlife rich Pantanal region. Enjoy lunch at our ecolodge, followed by some time to rest. Later we will have a presentation to learn about the surroundings, environmental initiatives and local projects.

After dinner, we have time to enjoy a night walk.

Overnight in the Pantanal.

---

## **DAY 10 PANTANAL WILDLIFE SAFARIS BY JEEP & CANOE**

Today we enjoy the abundant wildlife of the Pantanal region. We explore the Pantanal by jeep,



and also enjoy a canoe excursion, where we will have ample wildlife and photographic opportunities. For those interested, there is also horseback riding and walks available.

Overnight in the Pantanal.

---

### **DAY 11 TO PORTO JOFRE, JAGUAR SAFARI BY BOAT**

After breakfast we depart for Porto Jofre. Upon arrival we will have lunch and then depart by boat down the Piquiri River and into the channels, where we will search for jaguars.

Overnight in Porto Jofre.

---

### **DAY 12 JAGUAR SAFARIS**

After breakfast we depart for a morning boat trip on Cuiaba River, exploring the channels in search of jaguars.

After lunch at the hotel, we depart for an afternoon excursion in hopes of more jaguar sightings. The region has the highest density of jaguar populations in the entire Pantanal, and we have a 95% chance of seeing jaguars, especially from mid June to mid November.

Overnight in Porto Jofre.

---

### **DAY 13 TO RIO DE JANEIRO**

We start the day with an early breakfast, followed by a long but scenic drive back to Cuiabá Airport.

Upon arrival in Rio, we will check in to our hotel and have time to rest before dinner.

Overnight in Rio de Janeiro.

---

### **DAY 14 RIO - ONE OF THE WORLD'S MOST BEAUTIFUL CITIES**

After breakfast, we explore the city, which includes a visit to the most important sites of Brazilian







Rio de Janeiro.



history in Rio. This includes the National Library, Tiradentes Palace, the Portuguese Royal Lecture Room, the Pao Imperial and the panoramic view of the colonial buildings that remain at Uruguaiana Street.

After lunch we will visit Sugar Loaf Mountain. It was at the feet of Urca Hill that the city of Rio de Janeiro was founded in 1565 by Estacio de Sa. First we travel by modern cable car from Praia Vermelha to Urca Hill, located at 215 meters of altitude, a point from which you can see all of Guanabara Bay and its islands, Flamengo Park, Corcovado and the Rio-Niteroi bridge, as well as the majestic mountains that protect and embellish the city.

We then ride a second cable car that will take us to the top of Sugar Loaf Mountain, at 395 meters, which gives a beautiful and unique perspective - the beach of Copacabana, Santa Cruz Fortress and

some beaches of Niteroi. We finish our day with a tour of downtown Rio to see the most beautiful monuments of old Imperial Rio.

Overnight in Rio de Janeiro..

---

### **DAY 15 RIO DE JANEIRO - CORCOVADO, SANTA TERESA, BABILONIA COMMUNITY**

Rio sits on the coast against a backdrop of mountains. Its historic buildings, massive squares, beaches, nightlife, and pleasant climate make Rio a perfect place to wind down from our 'wild' journey.

Today, we travel to Corcovado for a view of the massive statue of Christ the Redeemer that gazes across the bay. Definitely the most famous and enduring image of Rio - a stay in Rio wouldn't be complete without this experience. We also travel

to the charming district of Santa Teresa with its cobblestoned hilly streets, old homes, interesting museums and Rio's last surviving tram line.

After lunch we visit the Babilonia Community, founded and managed by the locals, the non-profit organization aims to generate employment and income to the associates providing environmental services and activities in the natural areas of Rio de Janeiro. Tonight we end our adventure with our farewell dinner.

Overnight in Rio de Janeiro.

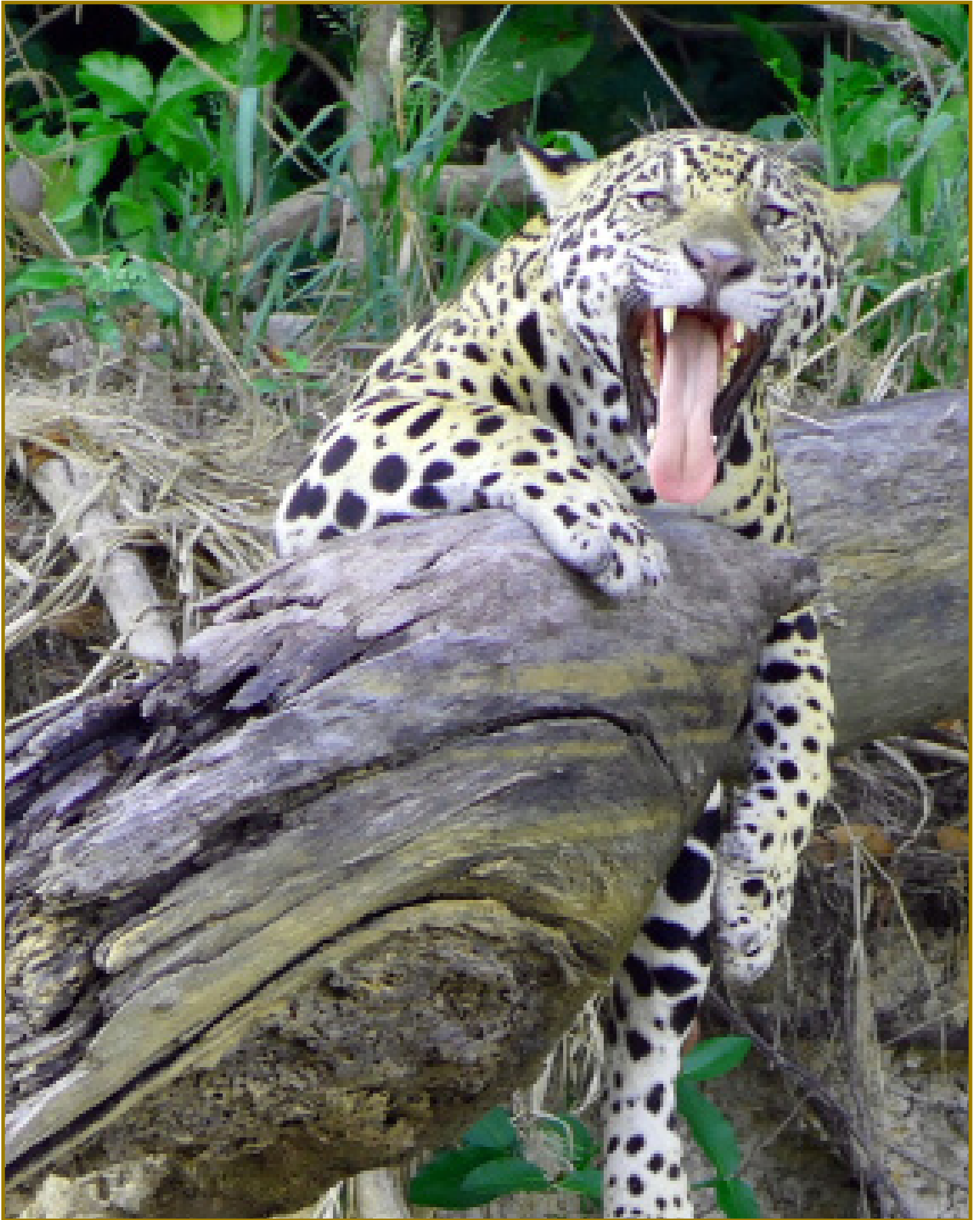
---

## **DAY 16 DEPART RIO DE JANEIRO**

Our adventure concludes with a transfer to the airport for your journey home.





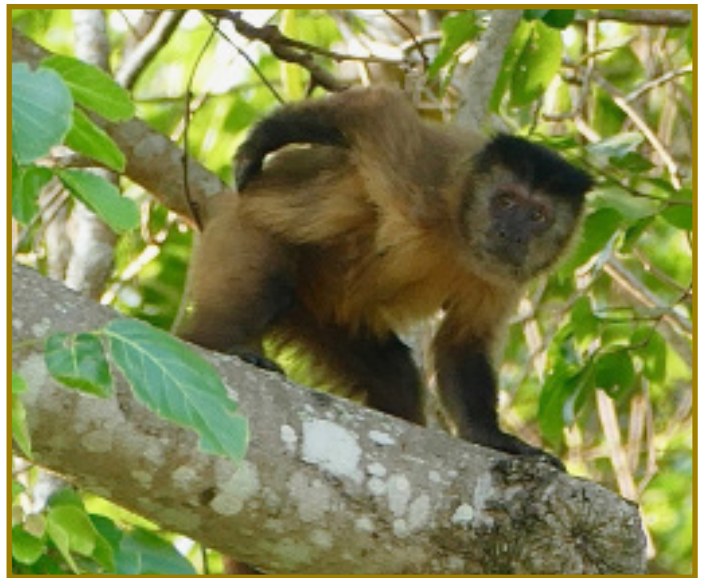














## QUESTIONS & ANSWERS

### 1. HOW BIG ARE THE GROUPS?

Each group is limited to 16 participants. Small groups are an important ingredient in adventure travel. They allow for more interaction and more personalized service throughout the itinerary.

### 2. WHAT IS INCLUDED IN THE TOUR PRICE?

All accommodations throughout; all meals, starting with dinner on day 1 and finishing with breakfast on departure day (i.e. the last day of the ElderTreks tour); bottled drinking water throughout the trip; all internal transportation; airport transfers on day 1 and departure day (i.e. the last day of the ElderTreks tour); all day trips and entrance fees as outlined in the itinerary; tips for hotels (portage) and bus driver, restaurants and spot guides; services of a trip leader.

### 3. WHAT IS NOT INCLUDED IN THE TOUR PRICE?

International flights, tips to ElderTreks tour leader, alcoholic drinks, and travel insurance.

### 4. ARE THESE “EDUCATIONAL” TOURS?

Yes, in the broadest sense of the word, “educational”. We visit museums, National Parks and Reserves and have talks and discussions on many aspects of history, culture and nature. However, this is only a portion of the educational experience. We believe that it is equally educational to get to meet local people on a non-commercial basis, visit their homes and even try to learn a few words in the native language. Sometimes the most “educational” moments are spent sipping a cold drink in a street market.

### 5. HOW DO WE TRAVEL DURING THE TOUR?

We use various forms of transportation including microbus or minibus, 4x4 vehicle, speedboat, ferry, motorized canoe, paddle canoe, and plane.

### 6. WHAT ARE OUR ACCOMMODATIONS LIKE?

We always stay in good accommodations — both hotels and lodges, where rooms have a private bath or shower.

### 7. WHAT ABOUT THE WEATHER?

In general, the weather is hot and humid in the Amazon region with temperatures exceeding 80°F (30°C). Overall, the climate is warm and inviting. For more information, please call our office for more detailed information about the weather on this trip.

### 8. WHEN IS PAYMENT DUE?

A non-refundable deposit of \$500 USD (plus insurance if you require it) is due at time of booking and will reserve your place on the tour. Payment of the full land price is due 120 days before departure. Cancellation charges are applicable and are outlined in the “Terms and Conditions” section of our brochure.

### 9. IS MEDICAL INSURANCE REQUIRED?

Insurance coverage is not included in the cost of your trip. Please note that medical insurance is not required for this adventure but is recommended. ElderTreks offers comprehensive travel insurance and we are happy to provide you with a quote if you call our office. If you are purchasing insurance elsewhere, please ensure you provide the details to ElderTreks as soon as possible.

*\*Please note those travelers with pre-existing medical conditions must take out travel insurance at the time of deposit*

### 10. WHAT SHOULD I TAKE ON THE TOUR?

There is a detailed “What to Take” list in our Trip Kit, which we will send to you after you have booked the trip.

### 11. WHAT MEALS ARE INCLUDED?

All meals during the itinerary are included, starting with dinner on day 1 and finishing with breakfast on departure day.

### 12. CAN YOU ARRANGE MY FLIGHTS?

We would be happy to take care of your air arrangements. ElderTreks offers personalized flight itineraries — not group flights. Stop over en route, come in a few days early, or extend your stay. Call us for a customized flight itinerary.

### 13. WHAT IF I WOULD LIKE MORE INFORMATION?

If you have any further questions about the trip, please do not hesitate to contact our office for additional information. A Trip Kit containing further details on the destination will be sent to you once you have booked on the tour.

